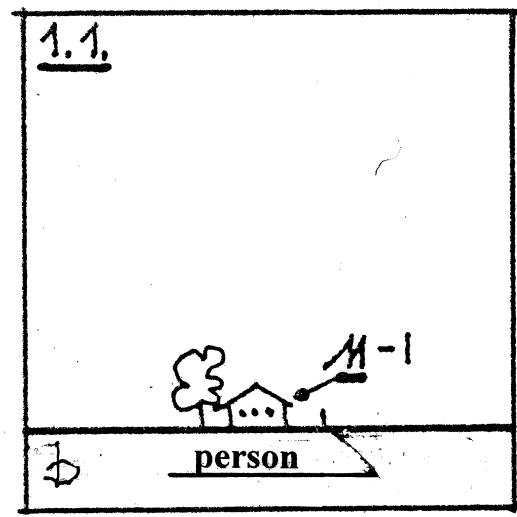
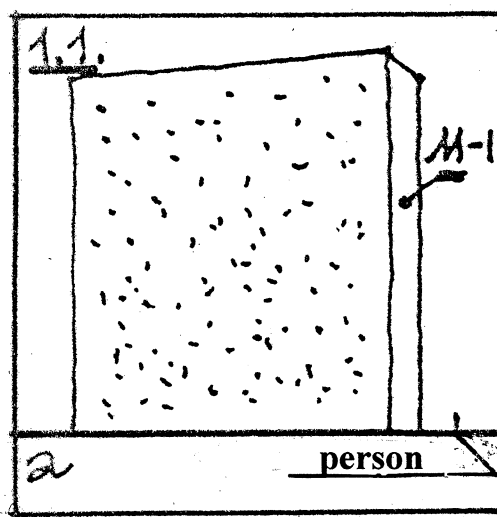


ILLUSTRATIONS FOR THE ARTICLE "ARCHITECTURAL SCALE"

1. THE FUNCTIONING OF SCALE MODULES.

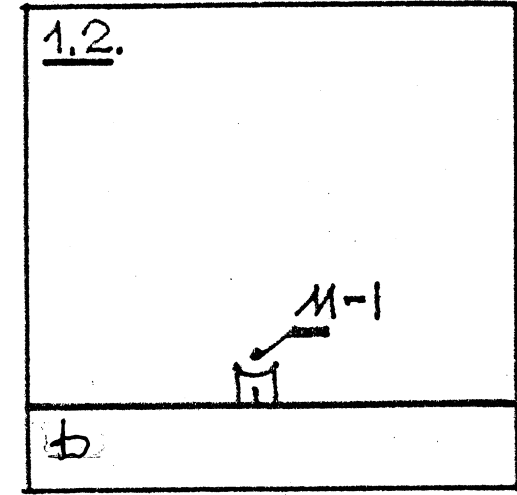
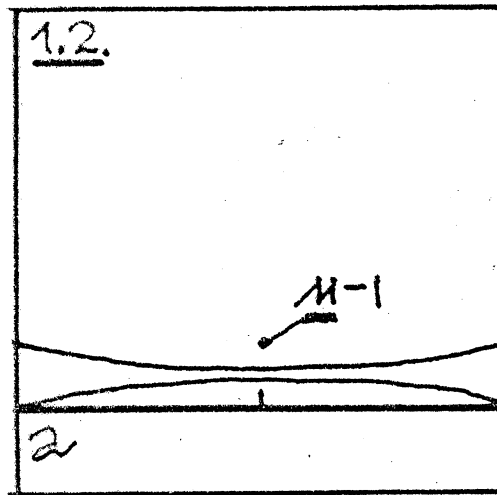
1.1 – volume module (M-1) determines the scale of the environment;

a – scale of environment is large; b – scale of environment is small.



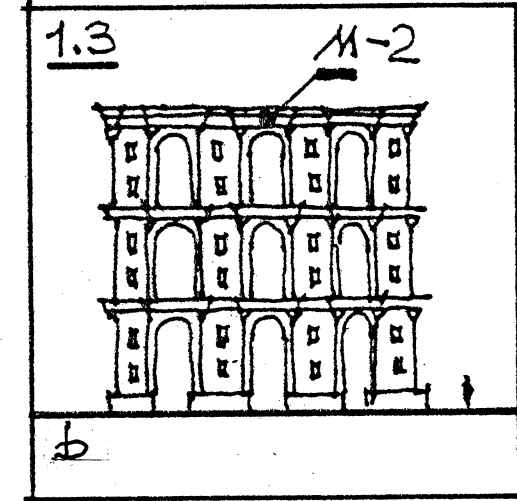
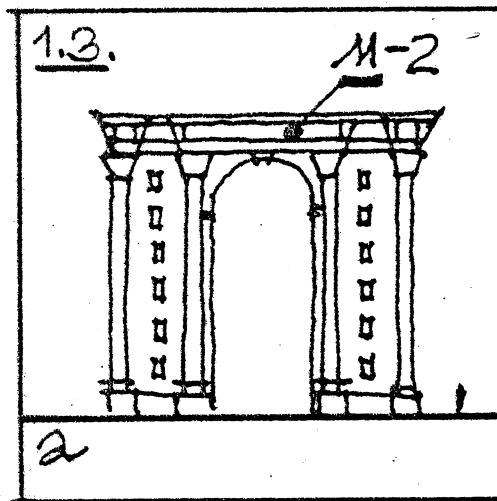
1.2 – expanse module (M-1) determines the scale of the environment;

a – scale of environment is large; b – scale of environment is small.



1.3 – fragment module (M-2) chiefly determines the scale of the building;

a – scaled of building is large; b – scale of building is small.



1.4 – detail module (M-3) chiefly determines the scale of the building;

a – scale of building is large; b – scale of building is small.

