

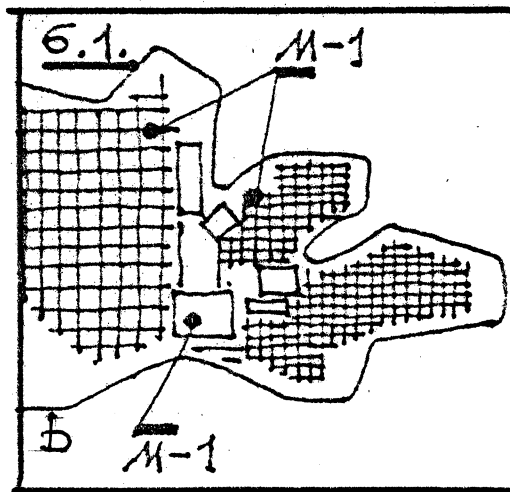
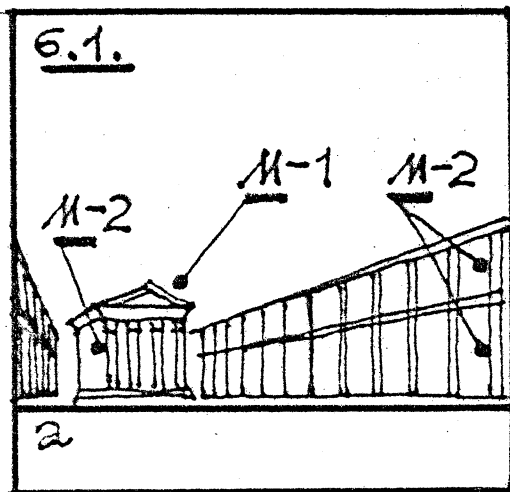
ILLUSTRATIONS FOR THE ARTICLE "ARCHITECTURAL SCALE"

6. SCALE ORGANIZATION OF THE ENVIRONMENT IN DIFFERENT HISTORICAL EPOCHS.

6.1 – Antiquity;

a – agora in Assos. Small temple holds a key position in the ensemble of extended portico's not only owing to placement on the axis, but also owing to the scale organization – volume (M-1) is exposed only in the temple, and its architectural order (M-2) is larger than the architectural order of the portico's.

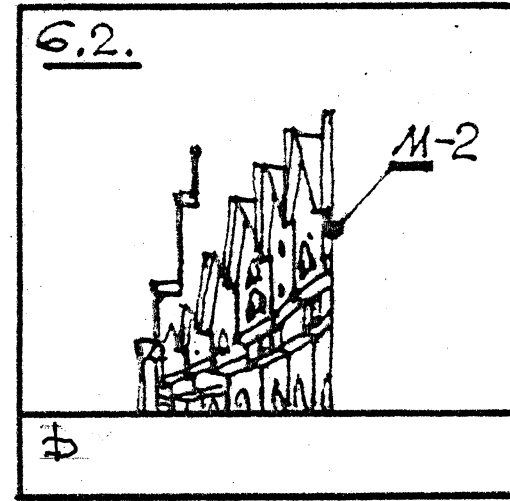
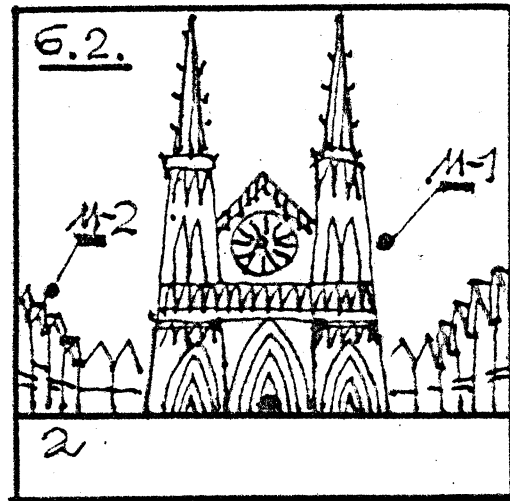
b – plan of Milet. The expanses (M-2) of the net of narrow residential streets and public squares contrast each other very clearly.



6.2 – Medieval;

a – owing to its placement on an island as is typical for cathedrals, its volume (M-1) is largely at work establishing the enormous scaled of the environment.

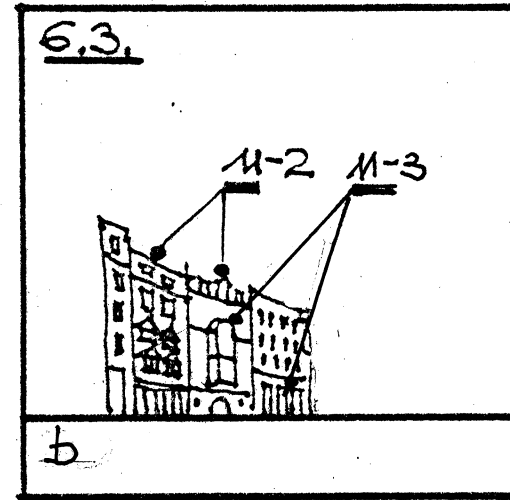
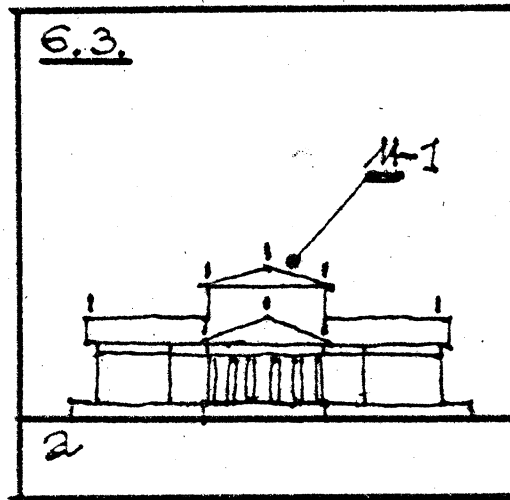
b – the scale of the environment of residential streets is small – it is determined by its small expanse and fragment module (M-2).



6.3 - XIX century;

a- theater in Berlin. Actively exposed volume (M-1), determining the large scale of the environment.

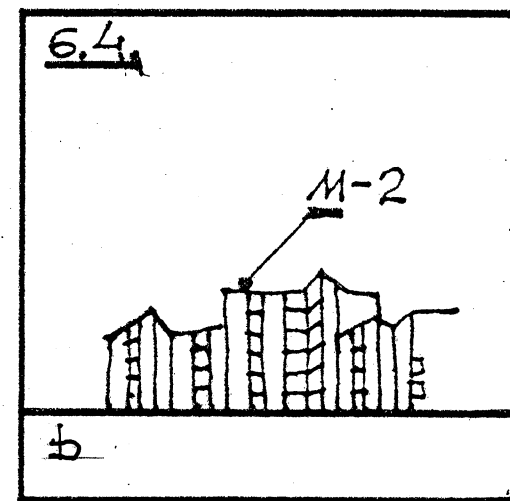
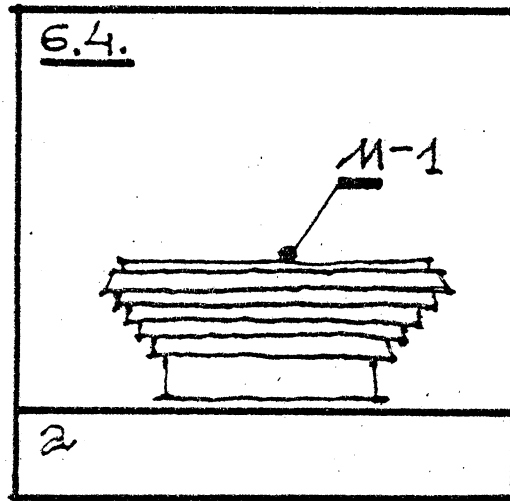
b-development of apartment houses on Tomaskirherhor Str., Leipzig. The scale of the environment is determined by the fragments (M-2) and the most visible details (M-3).



6.4 – the present day;

a – municipal building in the new town of Sergy-Pontois (France). The lapidary volume (M-1) is exposed, determining the large scale of the environment of the town public center.

b – group of residential houses in the Arsh-Guedon quarter, in the new town of Marne-la-Valle (France). The volume is not exposed, the scale of the environment is determined by the fragments (M-2). As a result, an intimate residential environment is created.



6.5 – distortion in the tradition of forming the environment;

a – the Set-Mar public center in the new town of San-Cantenan-Evelyn (France). Owing to the undivided development the volume module (M-1) is turned off. The scale of the environment is determined by the fragments (M-2) and is therefore small.

b – a characteristically French residential development of tower houses. Their volumes (M-1) are clearly exposed and determine the very large scale of the environment.

