

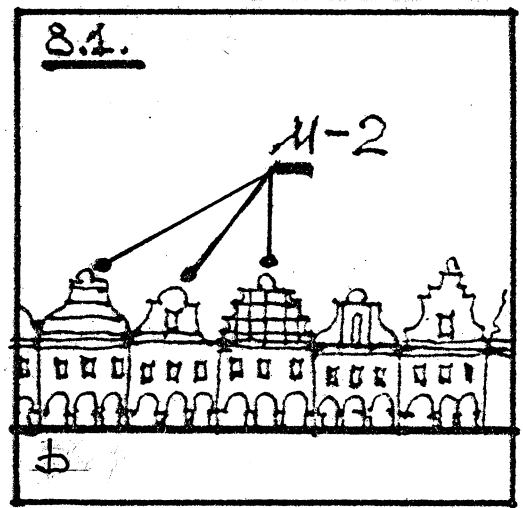
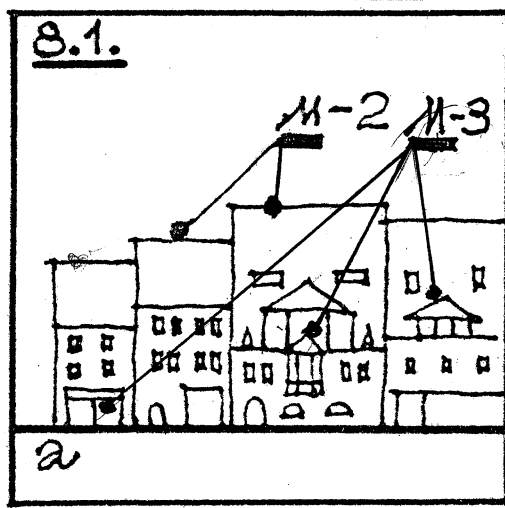
ILLUSTRATIONS FOR THE ARTICLE 'ARCHITECTURAL SCALE'

8. METHODS FOR THE INCLUSION OF NEW BUILDINGS INTO AN HISTORIC ENVIRONMENT.

8.1 - typical historic urban environment of central Europe;

a - development of Vurtsen (Germany). The scale of the environment is determined by non-repeating details (M-3) and fragments (M-2).

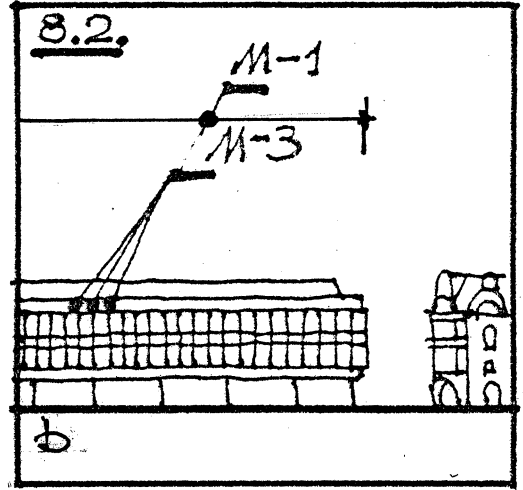
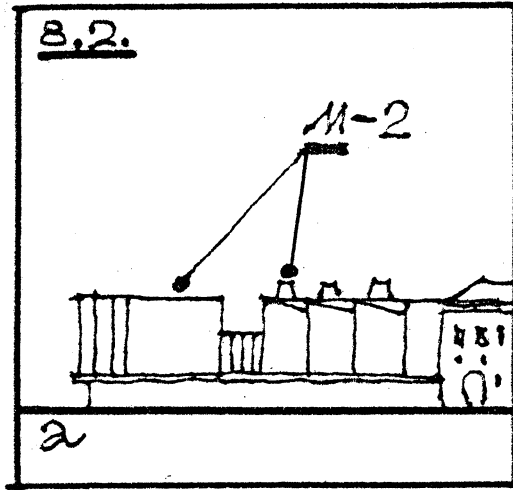
b - Telch (Chexia). Facades are equal but differ in drawing. The scale of the environment is determined by a fragment (M-2), and not by a block of fragments.



8.2 - preserving the height of development in the inclusion of a new building;

a - exhibition hall in Vilnus (Lithuania). The building, despite having but one stained-glass window per floor, which gives it a social character and meaning, possesses a complex form, the volume (M-1) is not perceived. Furthermore, the building is broken into fragments which are close in size to existing houses. As a result, the scale of the environment of the ancient road is preserved.

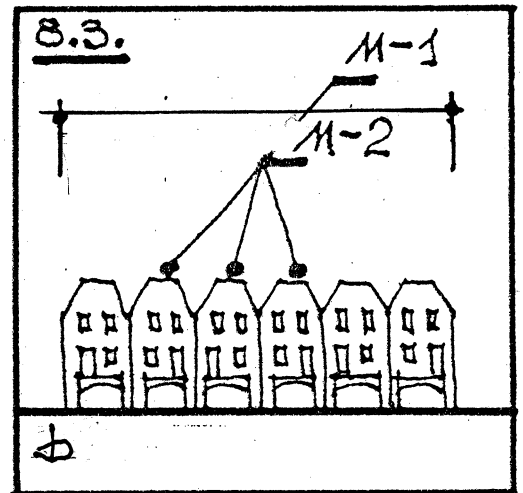
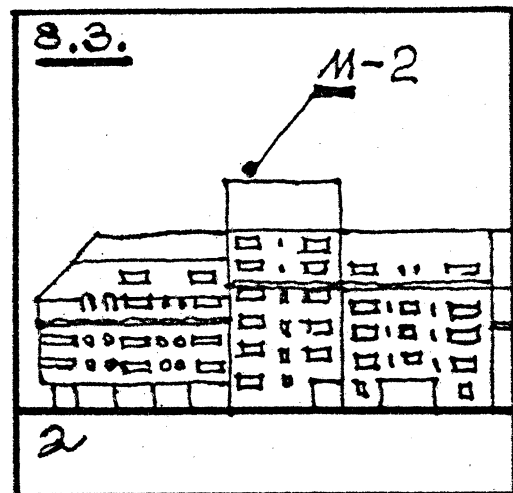
b - administrative building in Vilnus (Lithuania). The volume of the building is exposed, the M-1 module is actively working, moreover - it is strengthened by the combination of uniform windows into one single block of the building. As a result, the scale of the environment of fractionally decorated apartment houses is destroyed despite the preservation of the height of the development.



8.3 - residential development in an historic environment;

a - Erfurt. Despite the use of wall panels the houses are individualized, only the fragment (M-2) is working, and the development itself comes closer in character to an historic one (ill. 8.1 a).

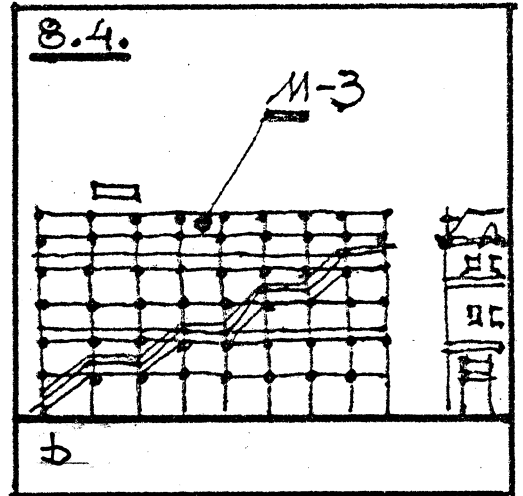
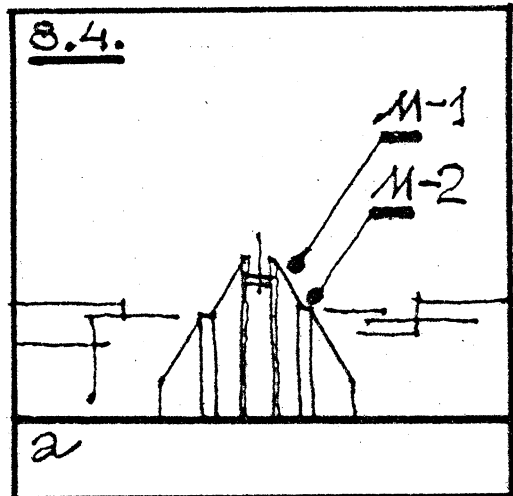
b - house in Tsvoll (Germany). With facades of equal length, despite being execute in brick, they are decided identically, unlike historic developments (ill. 8.1 b), because of which the fragments (M-2) are combined into a block, which determines the large scale of the environment.



8.4 - public buildings in an historic environment;

a - church in Leipzig-Trunau, Germany. The important meaning of this small building is revealed owing to the island placement of its volume (M-1) and the large size of its fragments (M-2). All in all this creates a relatively large scale of the building and environment.

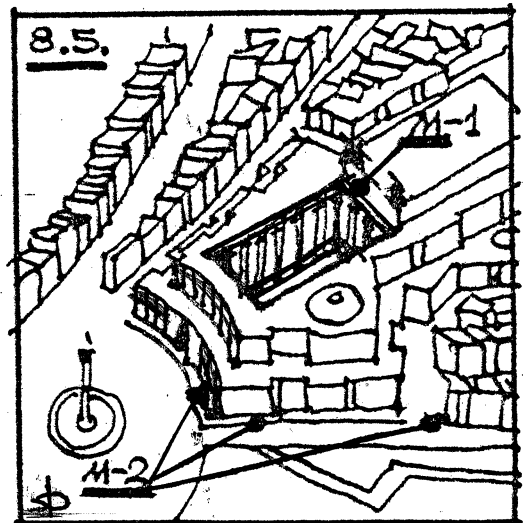
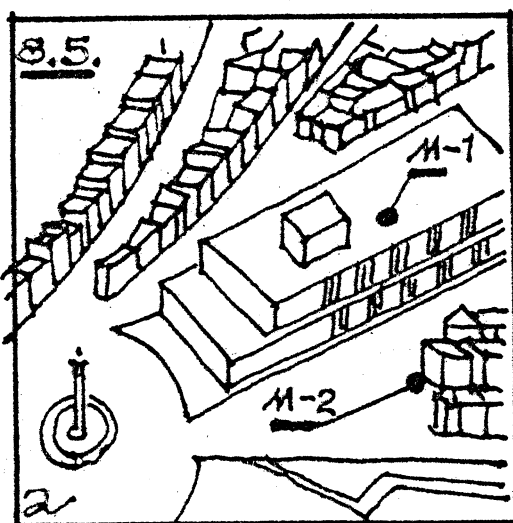
b - "Centre Pompidou" in Paris. Owing to its height, which is equal to the height of the surrounding development, with the extraordinary fragmentation of the facades and their delicate work, this large building fits in relatively painlessly into the historic environment in regards to scale (this occurred despite its extremely unusual form.)



8.5 - the inclusion of a public building of high importance into an historic environment;

a - one of the projects from the "Bastille Opera" competition in Paris. A large, clearly expressed volume (M-1) is included into a small scale environment, as a result of which the scale of the environment is destroyed. The attempt comes closer to the height of the surrounding development due to the layering method and does not give a result.

b - the "double façade" method. The outside façade is identical to the surrounding development. The façade facing the inside court is worked out in large scale owing to the large sizes of the fragments (M-2) of the peristyle, which are combined into one, single block. This block carries the function of the volume module (M-1), which is very important for public buildings.



Handwritten signature: V. P. Meshcheryakov