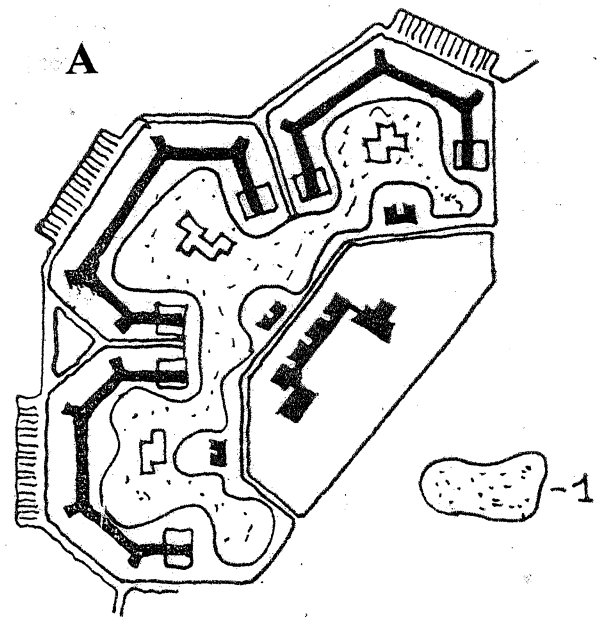
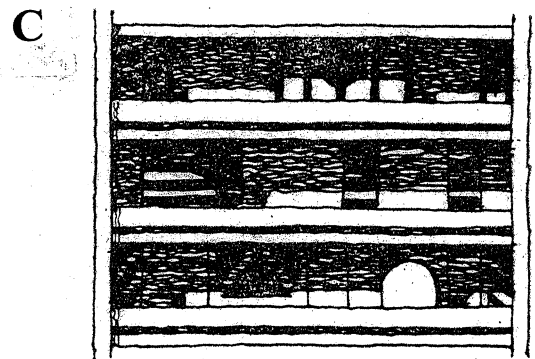
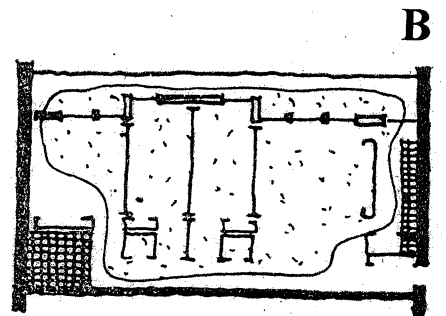
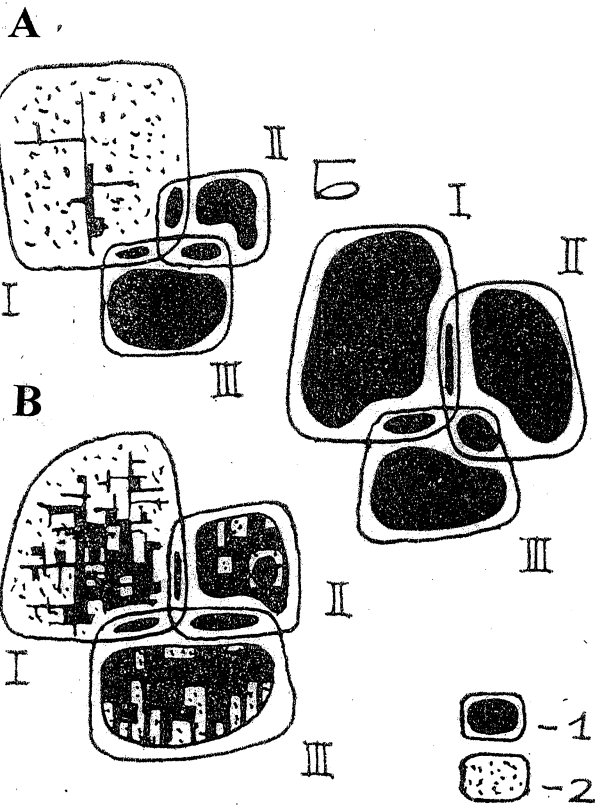


POSSIBILITIES FOR SPONTANEOUS
 WORK IN A RESIDENTIAL



SPHERES OF DESIGNED AND SPONTANEOUS
 WORK IN A TOWN ENVIRONMENT



A- through the equipping of residential territories;
 B- through the individual planning of apartments;
 C- through the decoration of the outside wall of a residential unit. 1- field of spontaneous work

A- traditional;
 B- modern;
 C- modernized.
 Environments of:
 I- residential; II- public;
 III- industrial developments.
 1 - designed environment,
 2-spontaneously created

W. H. Hashinsky