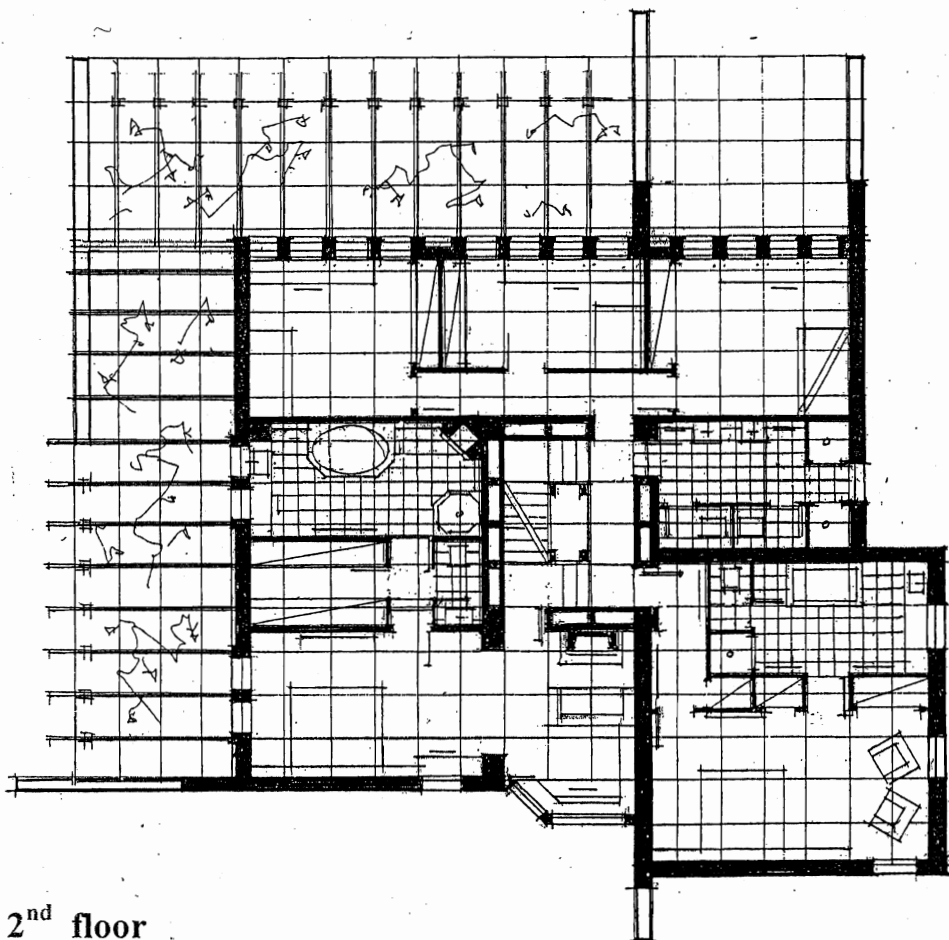
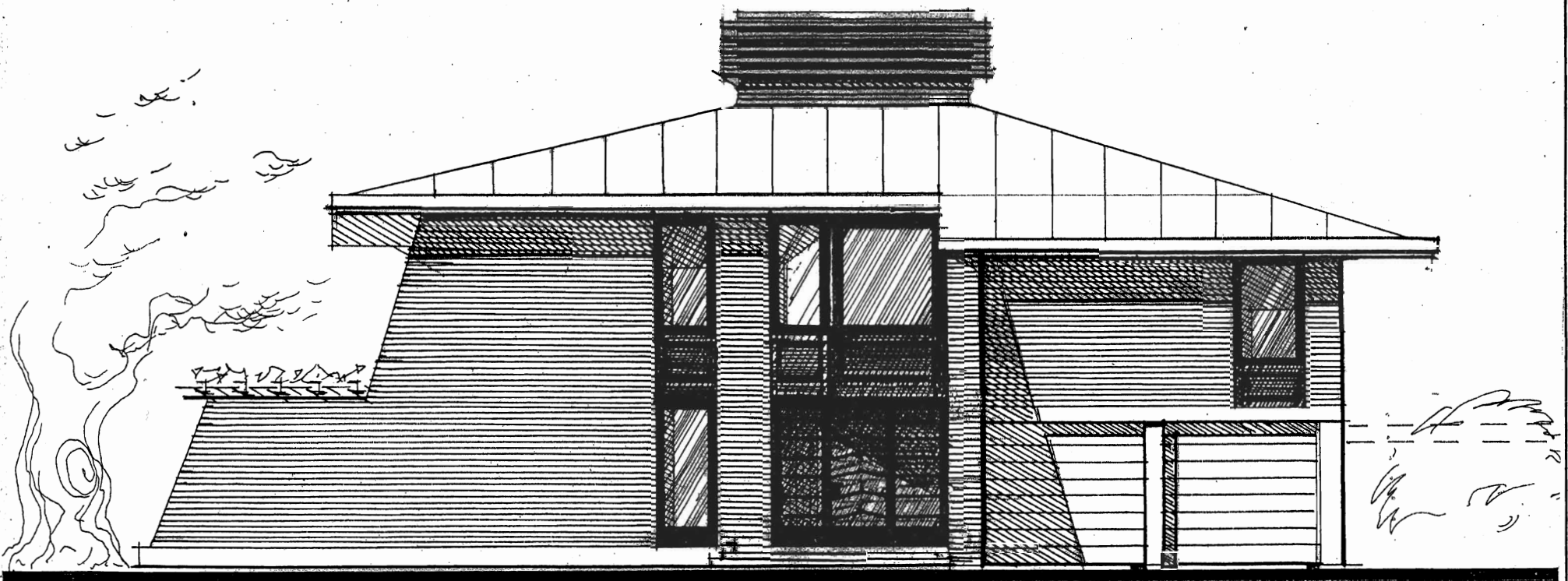
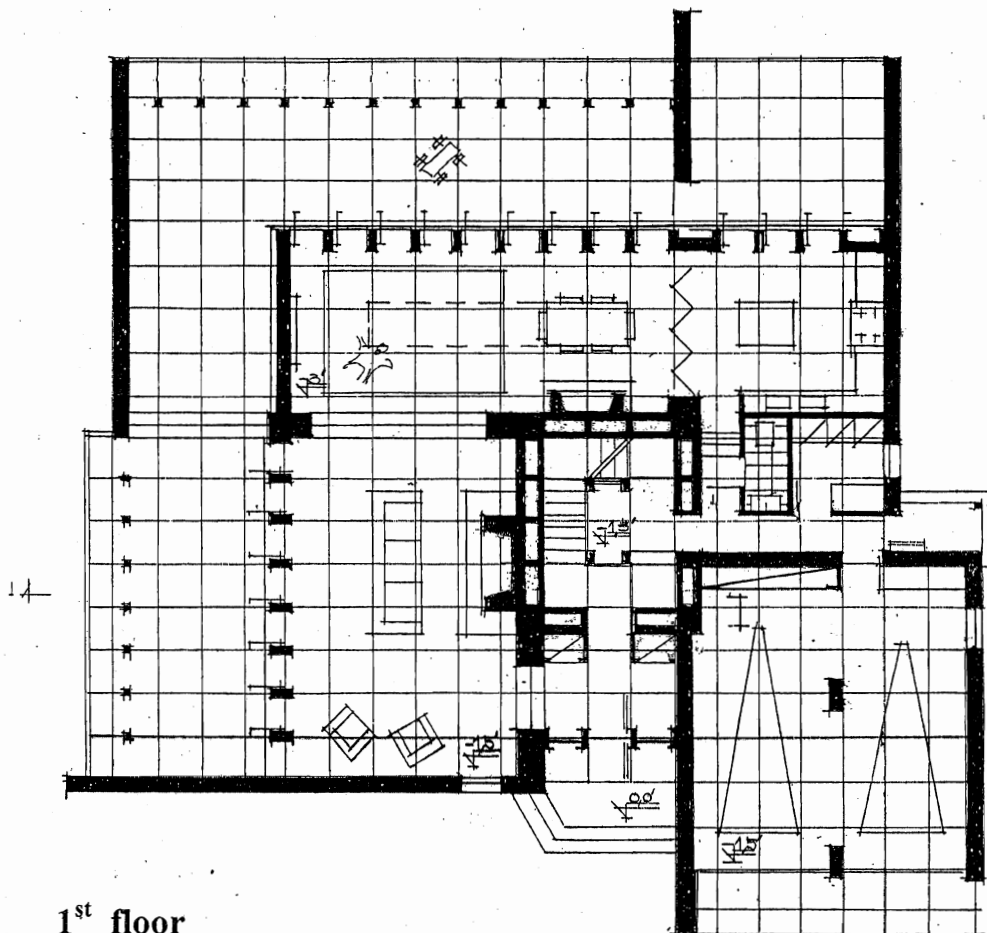


ECOLOGICAL HOUSE 'KERNEL'



2nd floor



1st floor

This house is designed for the eastern region of the USA, which is known for its hot and humid summers, and cold and humid winters. Therefore, the main task is to ensure not only good cooling and heating, but also the effective ventilation of rooms. This task is solved by creating a powerful system of artificial exhaust ventilation, which is placed in the kernel of the house - the central tower. All of the vertical engineering communications are also placed here (cold and hot water pipes, sewer pipes, heating pipes, cool and warm air channels, and electricity, telephone, and television cables, etc). On the top of the tower, the central air condition is placed, and in the basement, the heater. The system of exhaust ventilation can be supplemented with artificial plenum ventilation with the collection of air from the green area of the plot. (The channels of the tower are shown conditionally)

The tower is equipped with a sky-light window.

The described decisions do not only increase the quality of the inner environment of the house, but they also bring down the expenditure of energy.

The presented project is the version of a house, which is placed on a slope. If the house is placed on a flat plot, all of the rooms of each floor are situated on equal levels, and two flights of stairs are used.

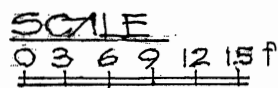
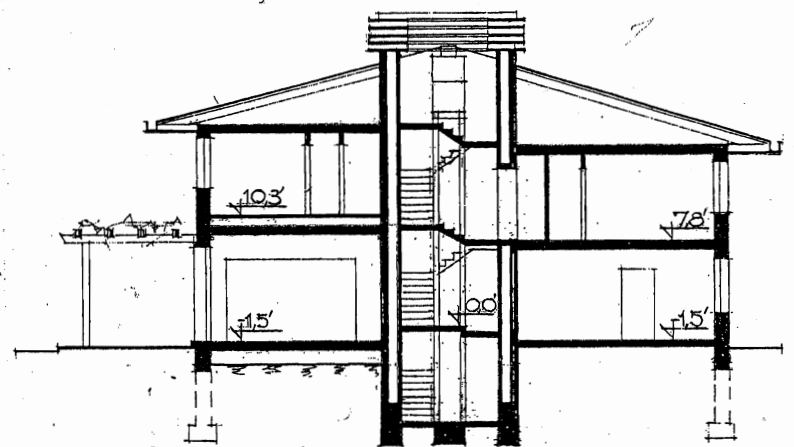
In the place of a garage, a bedroom for grandparents can be situated there. In this case, a visually isolated garden plot is placed around the bedroom.

In the place of the block containing the garage and guest bedroom, the owner's study and office can be situated.

Aside from the presented version of this project, the principle model of the ecological "kernel" house can be realized with other versions of layouts and façades.

The house is built of durable materials.

The living space of the presented version of the house is 2,750 sq. ft.



section 1-1

Viktor Mashinsky

**VIKTOR MASHINSKY
ARCHITECT**