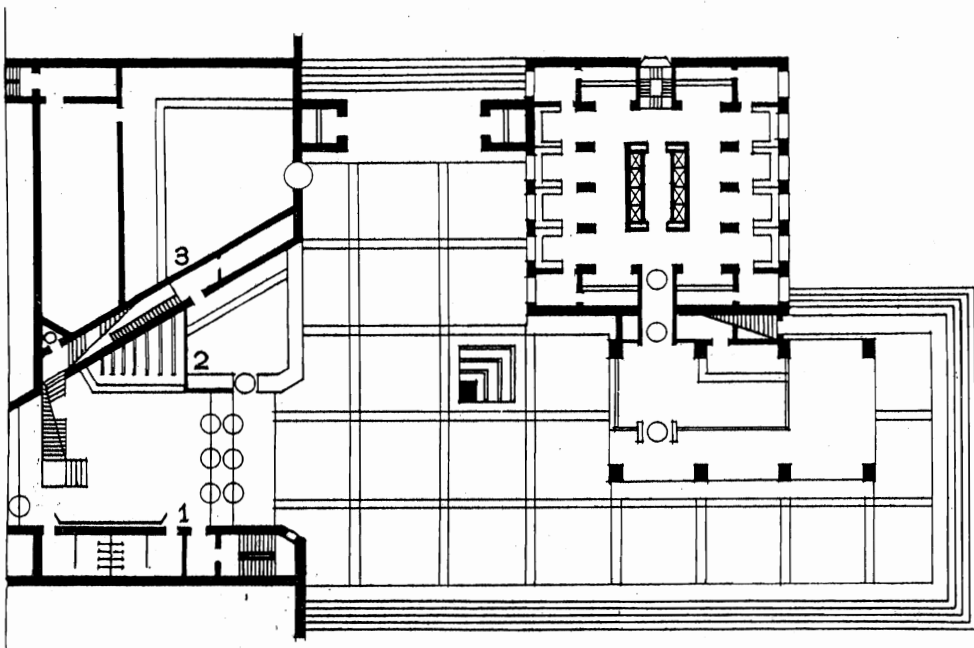
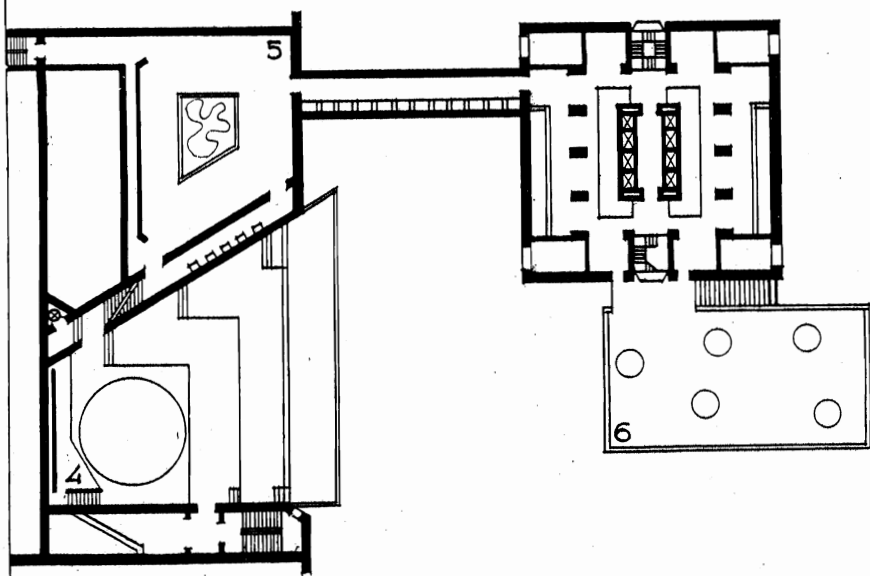


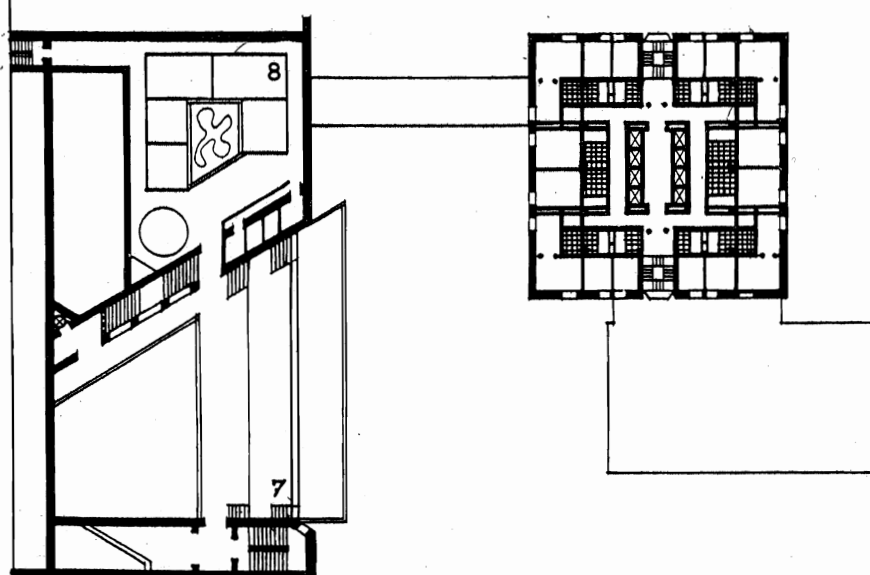
THE HOTEL IN THE OLD RUSSIAN CITY



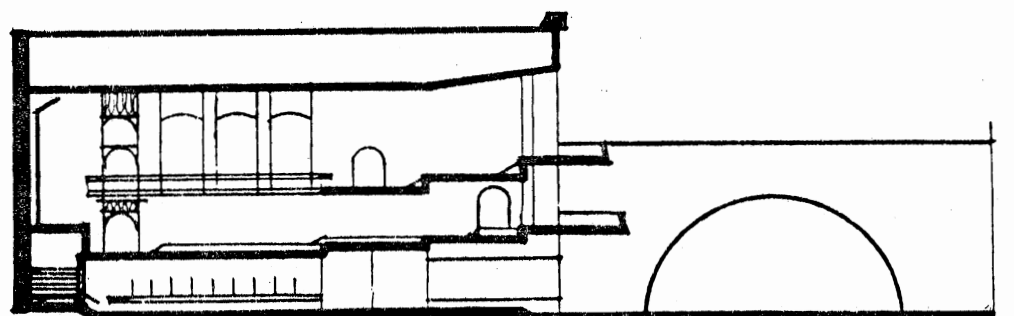
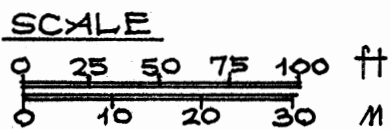
The plan of the ground floor



The plan of the second floor



The plan of the third floor



Section

The project of the Hotel, as well as the scheme of reconstruction of the historical center of the city, and master plan of the administrative and shopping center were designed by the author in 2007 based on his own program, as a not made to order, independent (with no affiliation with any project design firm, without co-authors or assistants) project.

The hotel is located in the historic center of the town, which has become a large industrial center with population of more than 500 ths. people.

The author's idea is that the historic center is transformed into a system of functional centers. The core, and at the same time, only architectural landmark of the historic center, is the citadel of the 16th century with several cathedrals of the 17-19th centuries within it. The designed system of functional centers includes the following:

- the Administrative and Shopping Center adjoining the main entrance of the citadel, with the city hall built in 1980s and the hotel in question;
- the Business Center located along the perimeter of the Administrative and Shopping Center;
- University and adjacent Sports and Performance Centers (the latter includes a library, an archive, various performance halls) that are located on the ample free territory of the citadel;
- the recreation center outside the citadel, on its opposite side, on the banks of the river.

The system of functional centers is supported by the two reconstructed main transport arteries of the city. All the transport ways within the system of the centers are deepened in the ground. Thus, all these functional centers represent a pedestrian zone. Under them, parking lots and underground lobbies of the Center's buildings are located.

Explication of the Hotel

1- the Restaurant lobby; 2,3 – souvenir shops and delicatessens; 4- the Restaurant that is designed as a sort of a theater with the stage, dance floor, and the space for the tables; 5- cafeteria; 6- open cafe and the cafe inside of the Hotel; 7- space for the tables; 8- banquet halls; 9- kitchen In the decorative part on the top of the Hotel there are luxury apartments. The technical premises are located above them.

The trunk of the tower is constructed from reinforced concrete in the movable (sliding) sheathing, and the decorative part and arcades of the first floor – from prefabricated reinforced concrete parts.

The height of the hotel tower (without the antenna) – 623 ft (190m.)

VIKTOR MASHINSKY
ARCHITECT