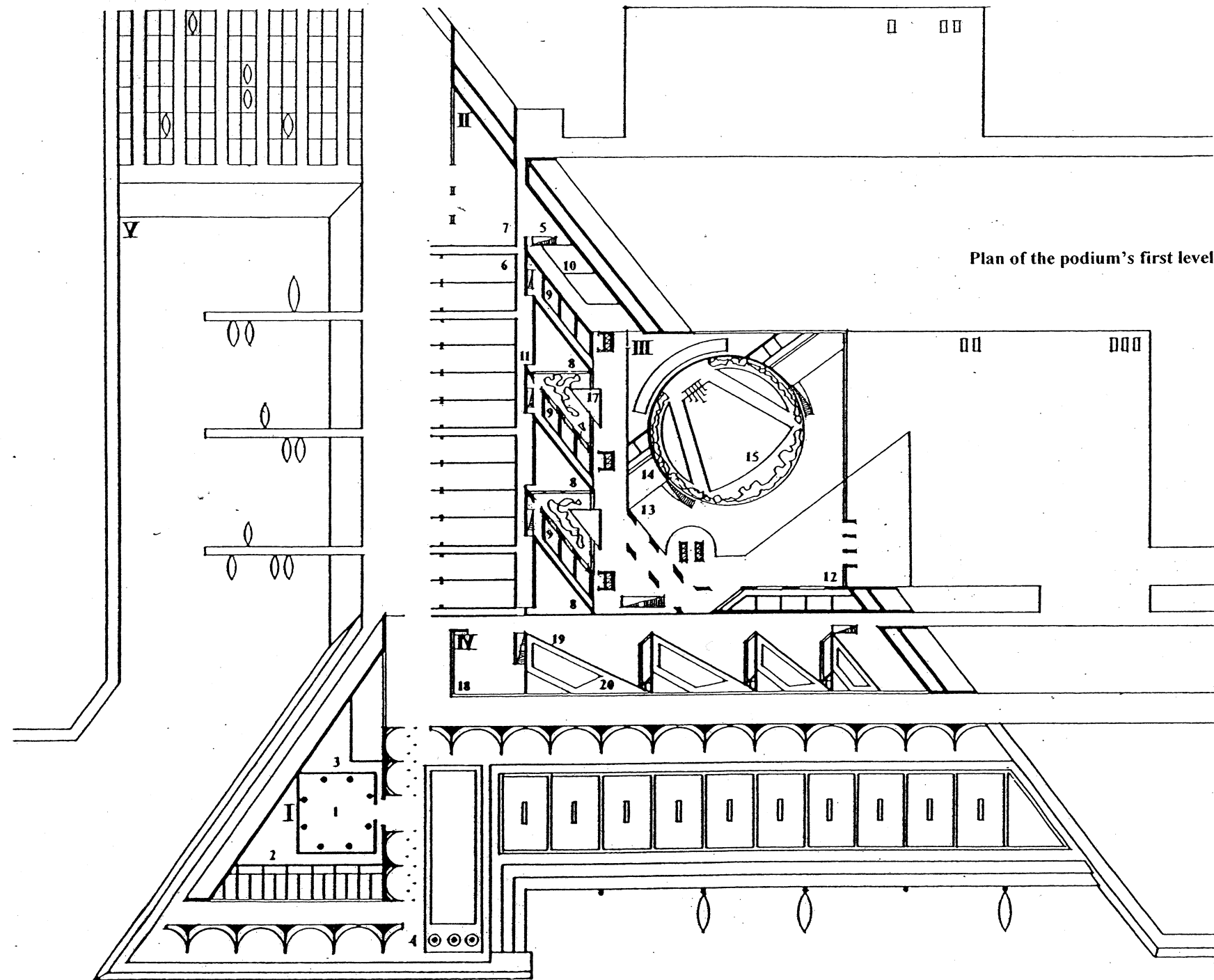
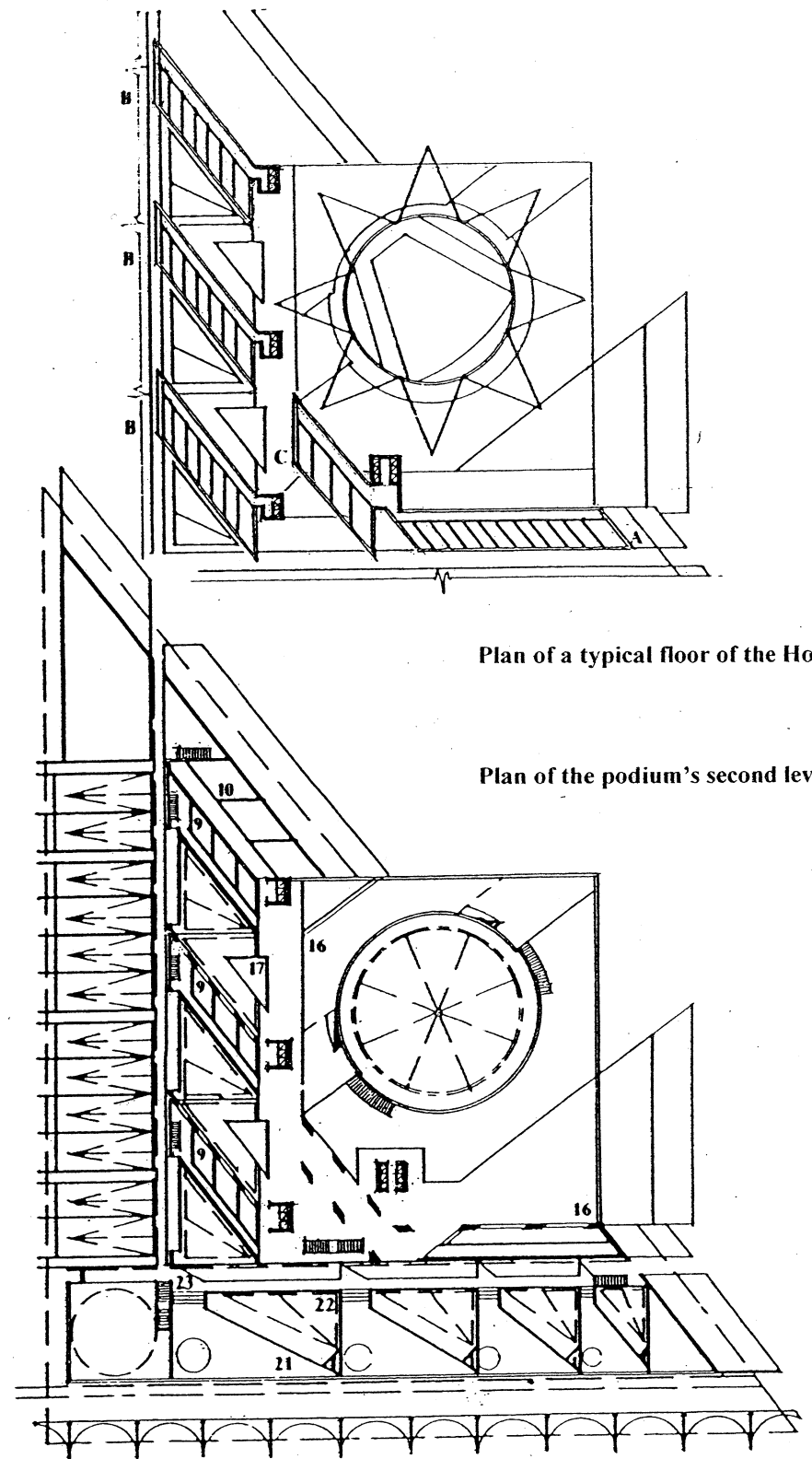


THE OLYMPIC SAILING CENTER TATYANA



Plan of the podium's first level



Plan of a typical floor of the Hotel

Plan of the podium's second level

This project was designed by the author in 1991 based on his own program, as a not made to order, independent (with no affiliation with any project design firm, without co-authors or assistants) project.

The project represents a new functional type of a large-scale Sailing Center, designed by the author. The Sailing Center is formed by five functional blocks. Each of the five blocks can function as its own entity. However, the blocks are also able to function together as one entity.

Explication: I. ADMINISTRATIVE BLOCK 1-court of honor; 2-administration, referees, radio-station; 3- yacht club; 4-flagstuffs and square for solemn ceremonies. II. SPORTS BLOCK 5-entrance hall of the

block; 6. -slipways and yacht depot; 7-workshops; 8 hall of sailing stimulators; 9-locker-rooms (1st floor) and classrooms (2nd floor); 10-rehabilitation center; 11-passage with skylight. III. BLOCK OF THE LIVE BY THE WIND HOTEL 12- entrance hall of the block; 13-foyer in the glazing space; 14-post-office, bank; 15- swimming pool with opening transparent roof; 16- cafe, cafeterias, and bars; 17-services. IV. BLOCK OF RESTAURANTS AND CONFERENCE HALLS (PRESS-CENTER) 18. -entrance hall of the block; 19-foyers with bars; 20-conference halls (press-center); 21- restaurants; 22-upper space of foyers with skylight; 23-passage. V. THE HARBOR Windows in all rooms overlook the sea.

Plans of the rooms in the form of parallelograms allow for a better functional zoning and wide panoramic seaside view. The Sailing Center buildings are assembled primarily from prefabricated reinforced parts. The outside walls of the hotel buildings are made of anodized glass. The capacity of the yacht landings is: 24 stand in the covered hangar and 96 open stands. During major competitions, temporary covered and open stands may be constructed on the opposite side of the harbor. The capacity of the hotel is 300-600 people. The height of the tallest building - 380 ft (116m.) The total area of all the spaces of the Center - 450 ths.sq.ft (42 ths.sq. m) Hotel's living space - 150 ths.sq.ft (14 ths. sq.m.)

Viktor Mashinsky

SCALE
0 60 120 180 ft
0 20 40 60 M

VIKTOR MASHINSKY
ARCHITECT