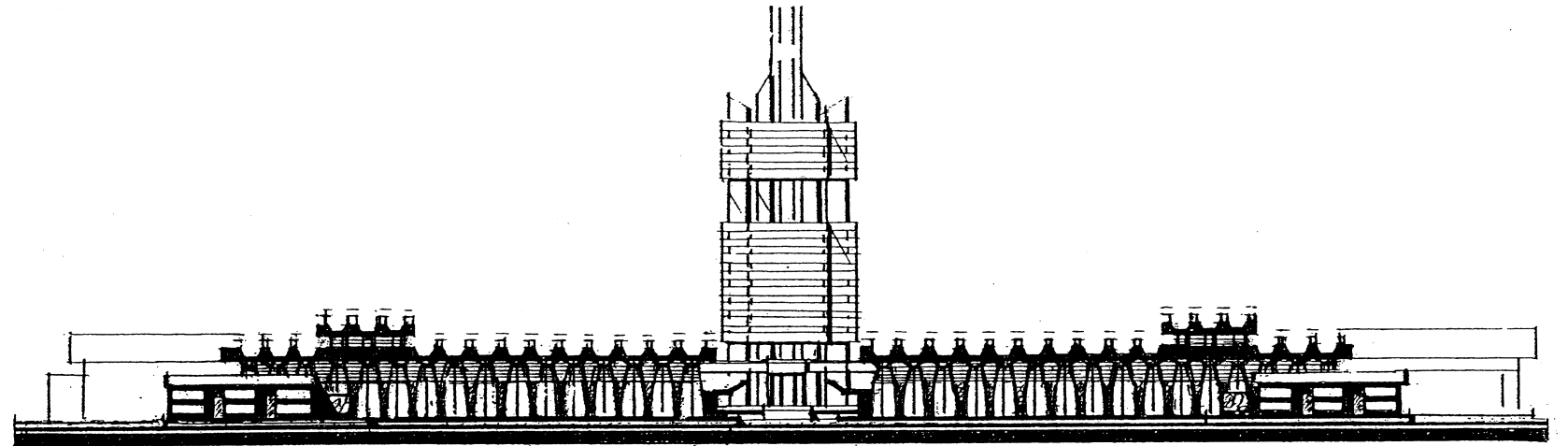


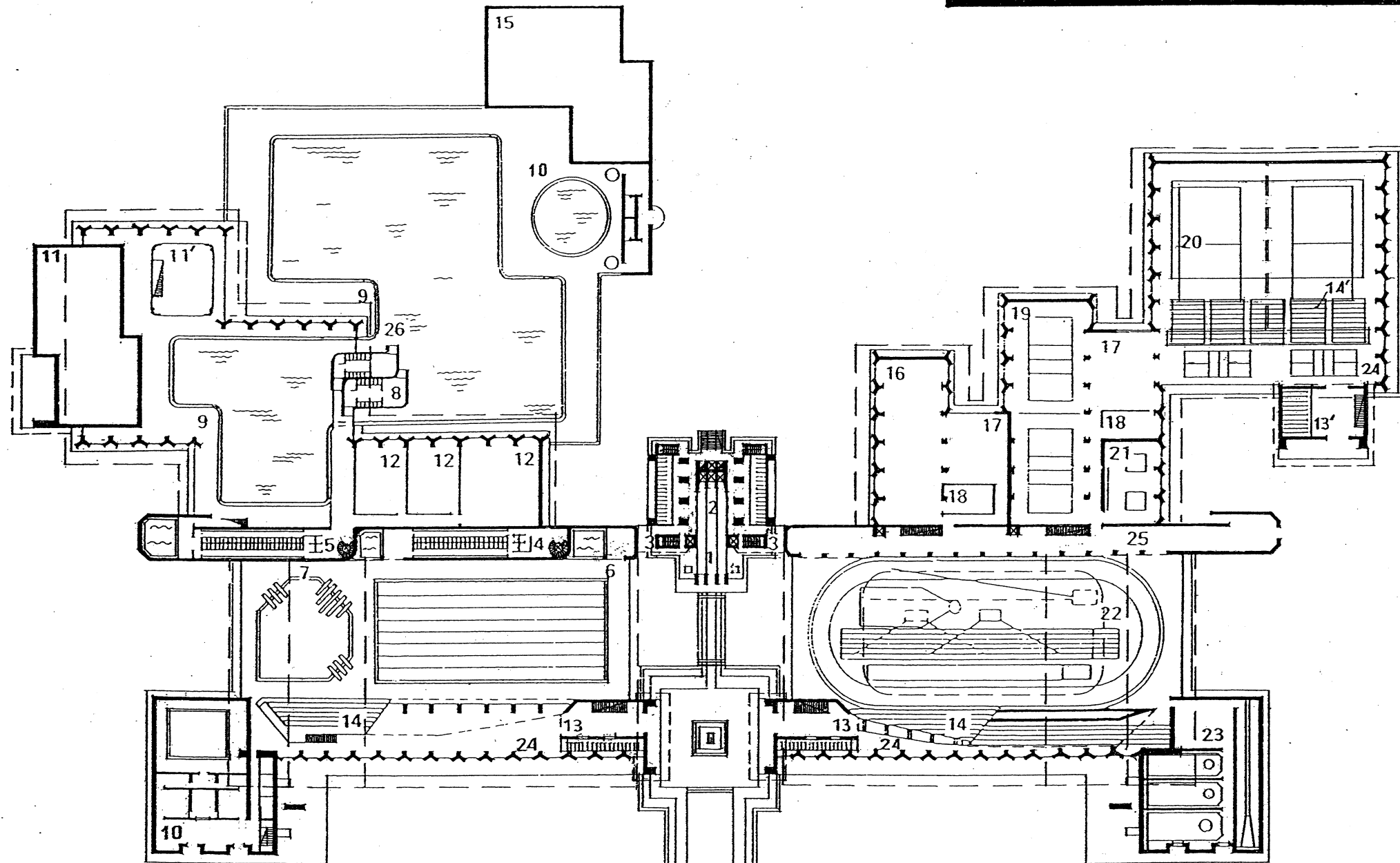
THE TOWER SPORTS CENTER

VERSION A. ALEKSANDRA

This project was designed by the author in 1995 based on his own program, as a not made to order, independent (with no affiliation with any project design firm, without co-authors or assistants) project. It is comprised of several versions of a new functional type of a large sports center, developed by the author.



Main facade



Plan of the ground floor

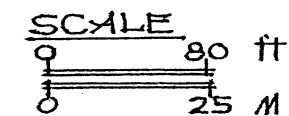
Viktor Mashinsky

The Tower Center includes numerous swimming pools, sports halls for various forms of sports, and an ice-skating rink. The uniqueness of this project is in placing of almost all auxiliary premises (locker rooms, rooms for the coaches, physiotherapists, doctors, administrators, etc.) in the Tower. They are connected with sports halls, swimming pools, and ice-skating rink by passages. Only few necessary auxiliary premises are placed beside the swimming-pools and sports halls. Such system ensures a certain number of functional, structural and planning advantages, and gives a chance to create a clear and impressive composition. The buildings of sports halls, swimming pools and ice-skating rinks are constructed mostly of prefabricated details, the Tower is made by the lift-slab method.

The principles of the towers' and wings' planning in versions "A" and "B" are analogous.

Explication: 1,2 - entrance hall and lobby for sportsmen; 3 - passage on the level of second floor from the Tower to buildings of sport halls, swimming-pools and the ice skating-rink; 4,5,8 - showers and racks for sportswear; 6,7,9- swimming-pools for sports-swimming (6), diving (7), and recreating- swimming (9); 10- swimming-pools for children; 11-spa, solaria 11' - cafeteria; 12 - halls for warm-up exercising before swimming; on the first floor for recreational swimming, on the second floor for sports-swimming; 13- entrance halls for spectators; cafeterias - on the open decks of the second floor; restrooms - in the basements; 13' - entrance-hall for sportsmen and spectators; locker rooms - on the 2nd floor; restrooms for spectators - in the basement; 14- the spectator stands; (14' - transformed; 15- technical compartments; 16,19, 20,21, 23- halls of various forms of sport; 17- gym; 18,25- stockroom (the halls for various forms of wrestling are located above these rooms) 17,18,21- hall for field and track athletics (winter) and the ice skating-rink (summer); 24 - areas for exercising and lobby for spectators during tournaments.

The dimensions of the Center: the height of the Tower to the top deck - 200ft (61m); the length of the main facade - 820 ft (250m). The area of the water surface in the swimming pools: covered - 29 ths. sq.ft (2.7 ths.sq.m); open - 35 ths. sq.ft (3.3 ths.sq.m.) The area of the sports halls - 116 ths.sq.ft (10.8 ths.sq.m.)



VIKTOR MASHINSKY
ARCHITECT