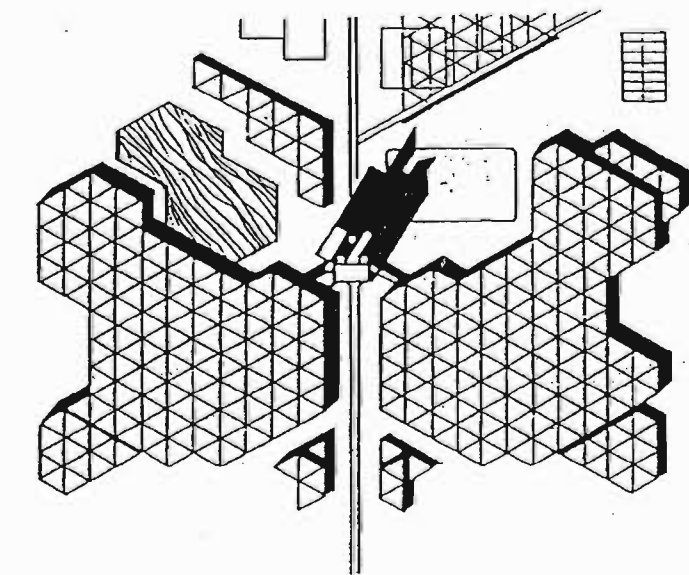
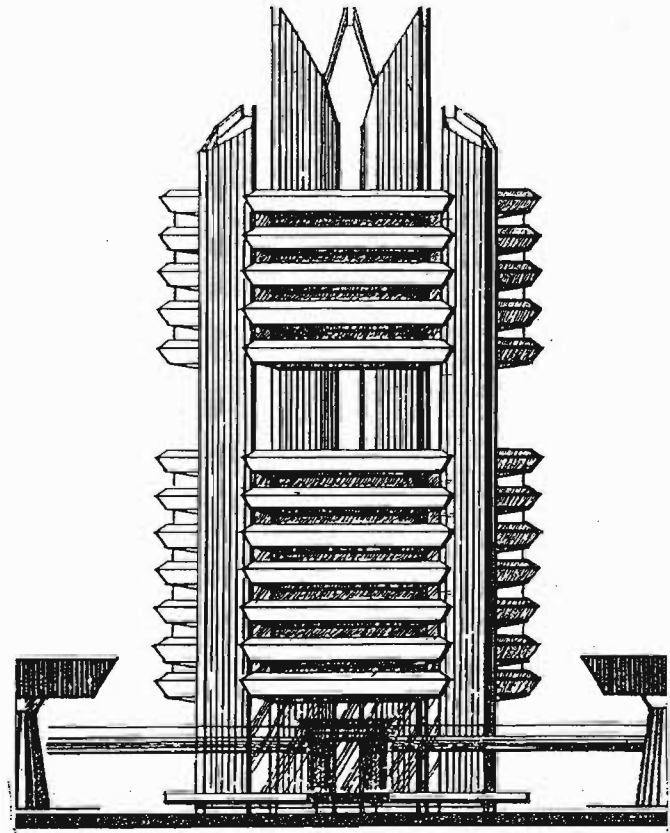


THE TOWER SPORTS CENTER

VERSION B.



PLAN OF ENTRANCE HALL (LEVEL
- 0.00)

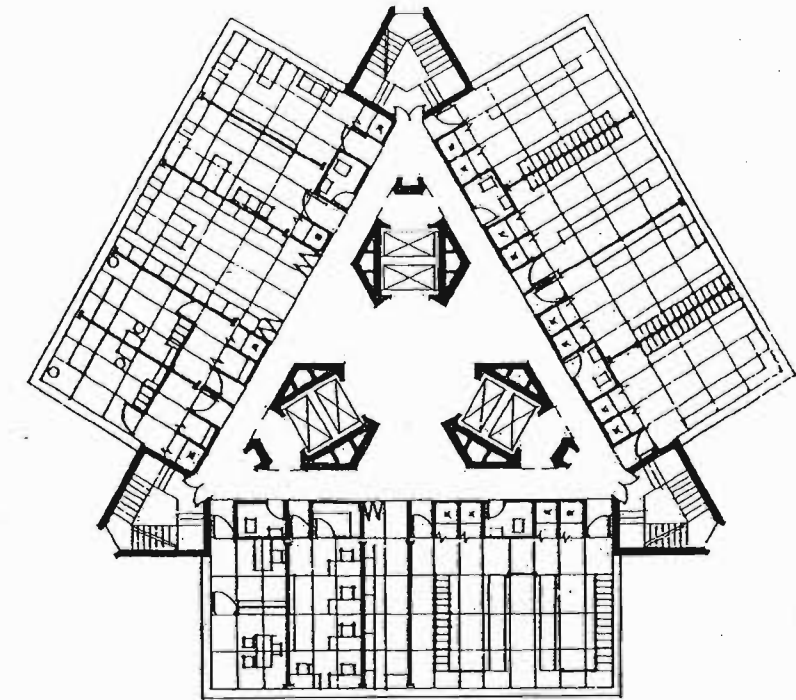
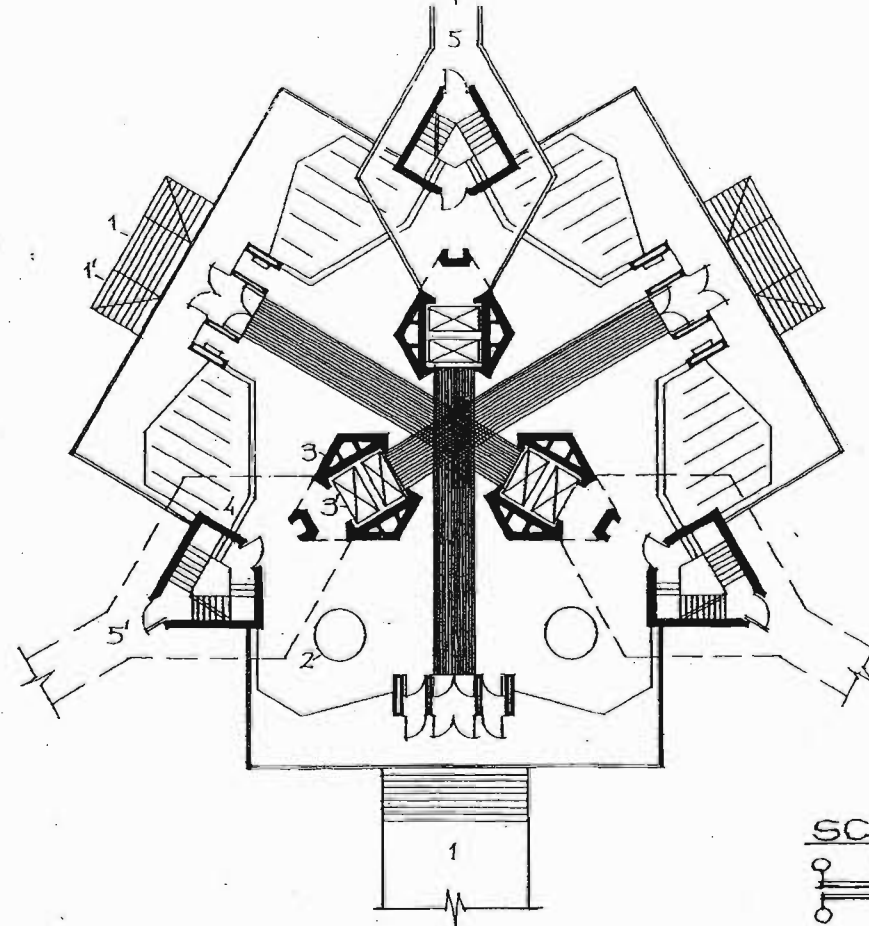
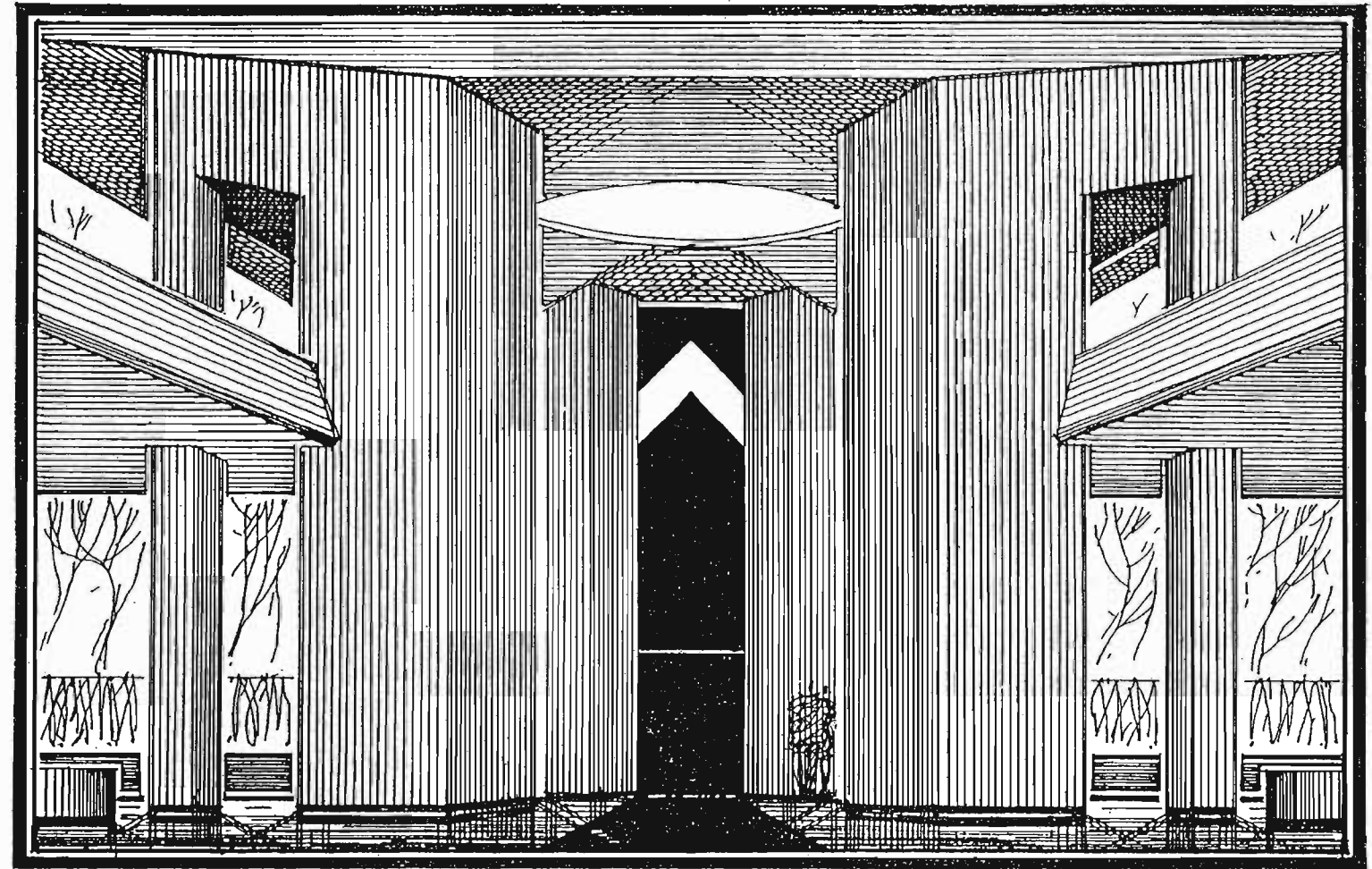
Explication: 1 - stairs to entrance hall.
1' - stairs to basement (cafeteria,
restrooms, cloakrooms for winter
skating-rinks). 2 - reception,
information. 3 - shaft of elevators and
technical communications. 3' -
elevators for people in sportswear. 4 -
cloakrooms for overcoats. 5 - passages
(on the level + 5.0m (16.4') to
swimming pools, sports halls and
playgrounds, fields, tracks. 5' -
projection of passages.

TYPICAL FLOORS WITH
TRANSFORMED PARTITIONS AND
EQUIPMENTS

A- Floors of premises for
administration, coaches,
massage, and rest.

B- Floors of locker rooms.

Premises of restrooms and showers
are assembled from standard modules
in the strips of engineering
communications.



SCALE
0 10 20 30 40 50 ft
0 5 10 15 M

VIKTOR MASHINSKY
ARCHITECT

Viktor Mashinsky