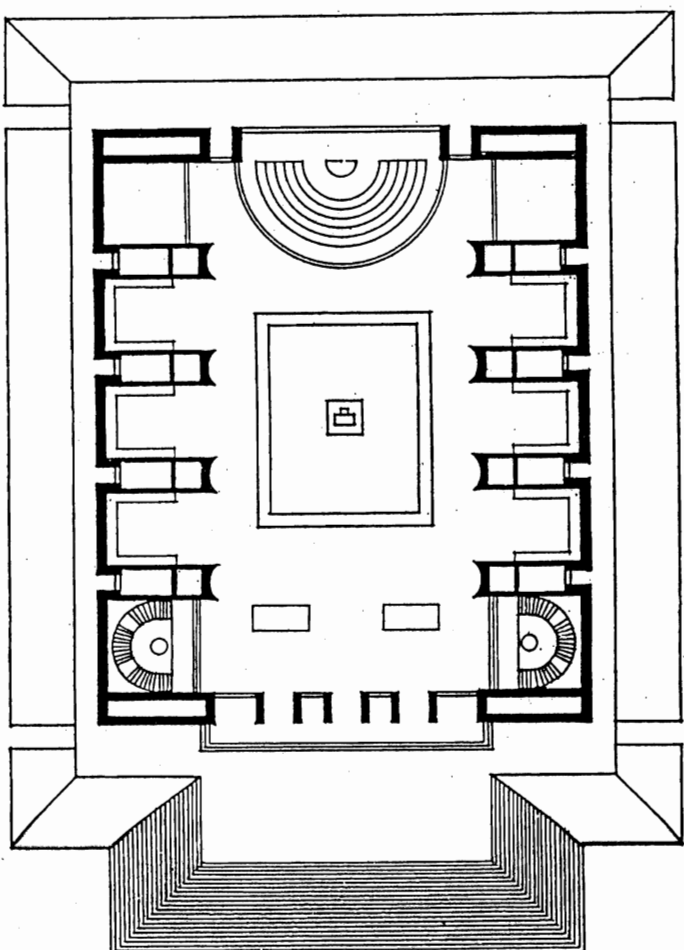
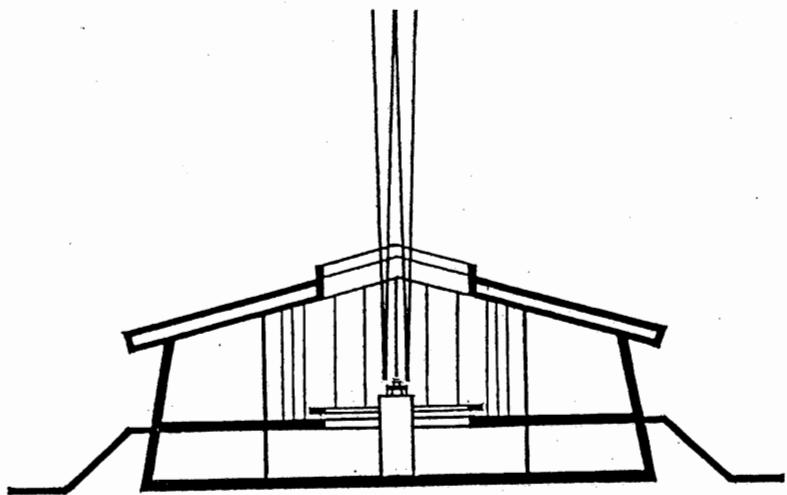
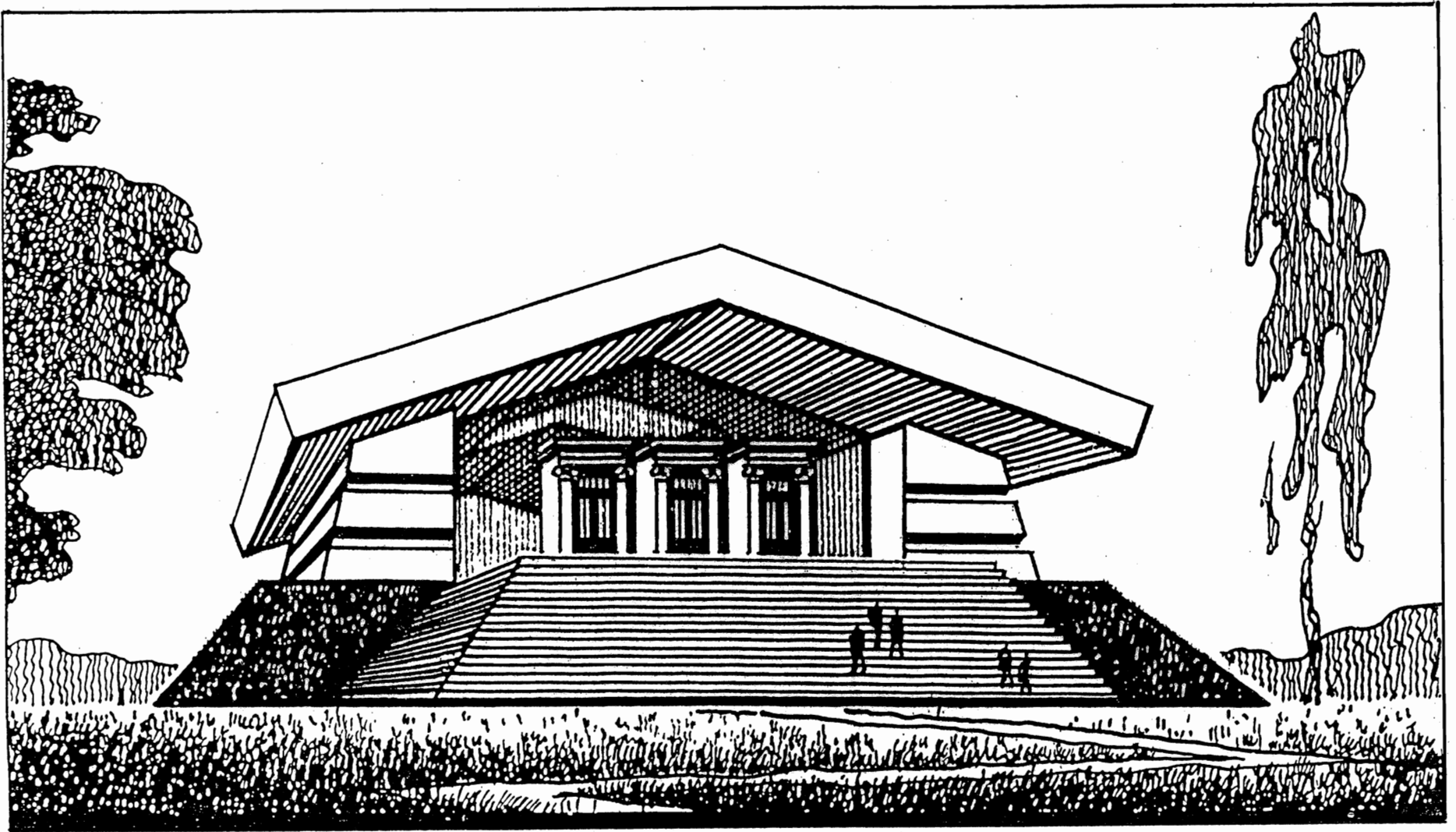


# THE MUSEUM OF THE GREAT RUSSIAN WRITER LEV TOLSTOY



The museum is located near the writer's manor "Yasnaya Polyana". The exhibition which is dedicated to the writer's private life is located on the 1<sup>st</sup> floor. The exhibition which is dedicated to his creative work is located on the 2<sup>nd</sup> floor. Compartments for audio-visual systems are placed between exposition halls. The writer's desk is situated on a pedestal and located in the center of the inner space of the building. In the four corners of the pedestal there are spotlights. At night, they create columns of light. The author believes that all museums such as this one dedicated to cultural figures should be equipped with the same sort of lighting set up.

A very large scale is give to this relative small building. The museum contains images which are congenial to L. Tolstoy: the image of the peasant log cabin, and at the same time, the image of a sanctuary which is made in the classicist style – the culture in which the writer was educated.

*Viktor Mashinsky*

**VIKTOR MASHINSKY  
ARCHITECT**

SCALE  
0 5 10 15 20 25 M