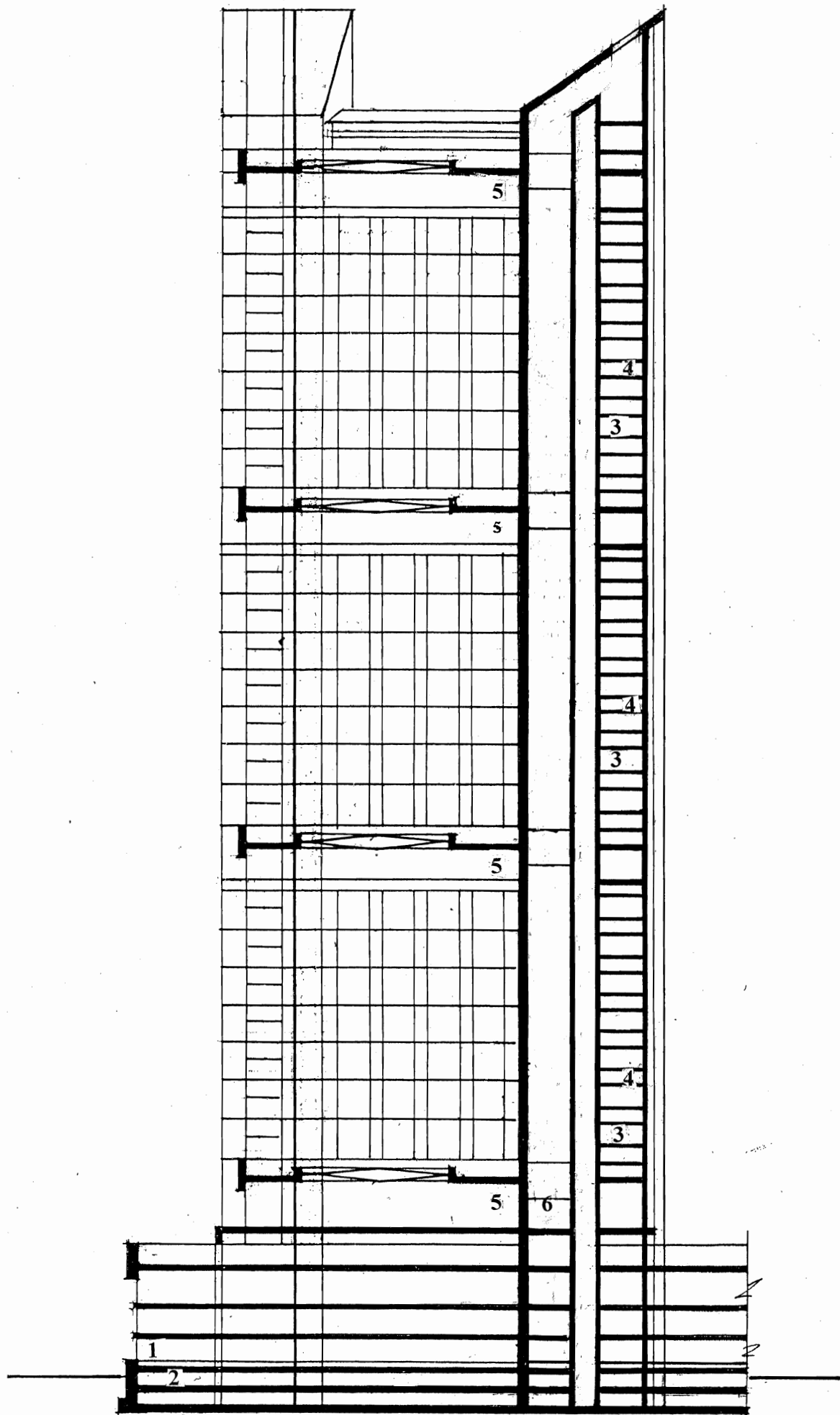


'VIKMA HIVE' RESIDENTIAL SKY - SCRAPER



SECTION 1 - 1

EXPLICATION

1—podium; 2- parking; 3- halls of elevators; 4- technical rooms; 5- rigid belts; 6- the main ventilation shaft.

EXPLANATION

The "Vikma Hive" is a new type of residential skyscraper developed by the author. This project solves the task of creating a cozy world needed in homes with regard to relatively small exterior expanses and small scale of the building itself. These problems are solved through the creation of cour d'honneur's of several indoor spaces through the entire height of the building, which all of the main dwelling areas of apartments would face. Ground levels of cour d'honneur's would be planted with trees around the perimeter, while their central portion would be occupied by transparent "lenses".

All of the apartments are designed on the principles of American 2-story residential homes. That circumstance that they all open up to their own, large 2-story loggias, which could hold small trees, creates for each of them a cozy, open external environment and makes each apartment into a penthouse of a kind. In the upper,

open cour d'honneur large apartments are situated.

In the rigid belts there are daycares, physiotherapy offices, halls for fitness machines, sport games and meetings, etc, along with technical premises, among them - ventilation equipment, which together with the main ventilation shafts provides a comfortable atmosphere regardless of outdoor conditions in the spaces of the cour d'honneurs.

Several "Vikma Hive" skyscrapers with a combined population of 6 - 10 thousand people are brought together by a podium, in which there are establishments for trade and service, necessary for the daily life of the population of these skyscrapers, along with elementary, middle, and high schools. In this way, this group of skyscrapers becomes a micro-district, a primary urban planning element of a correctly organized city.

VIKTOR MASHINSKY
ARCHITECT