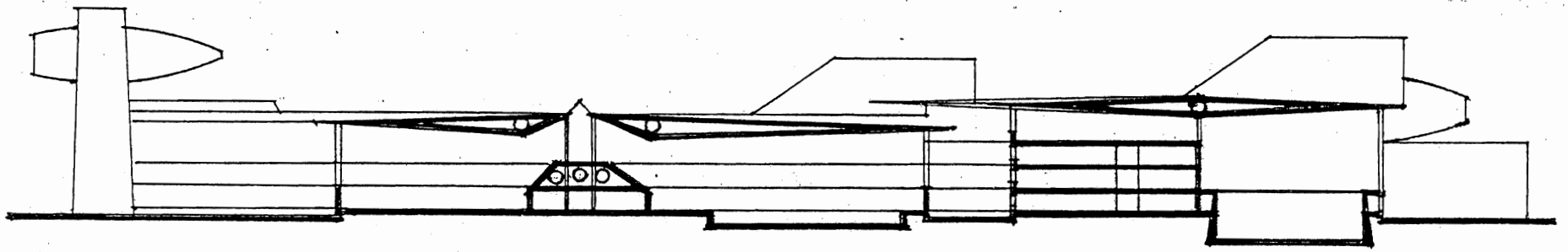
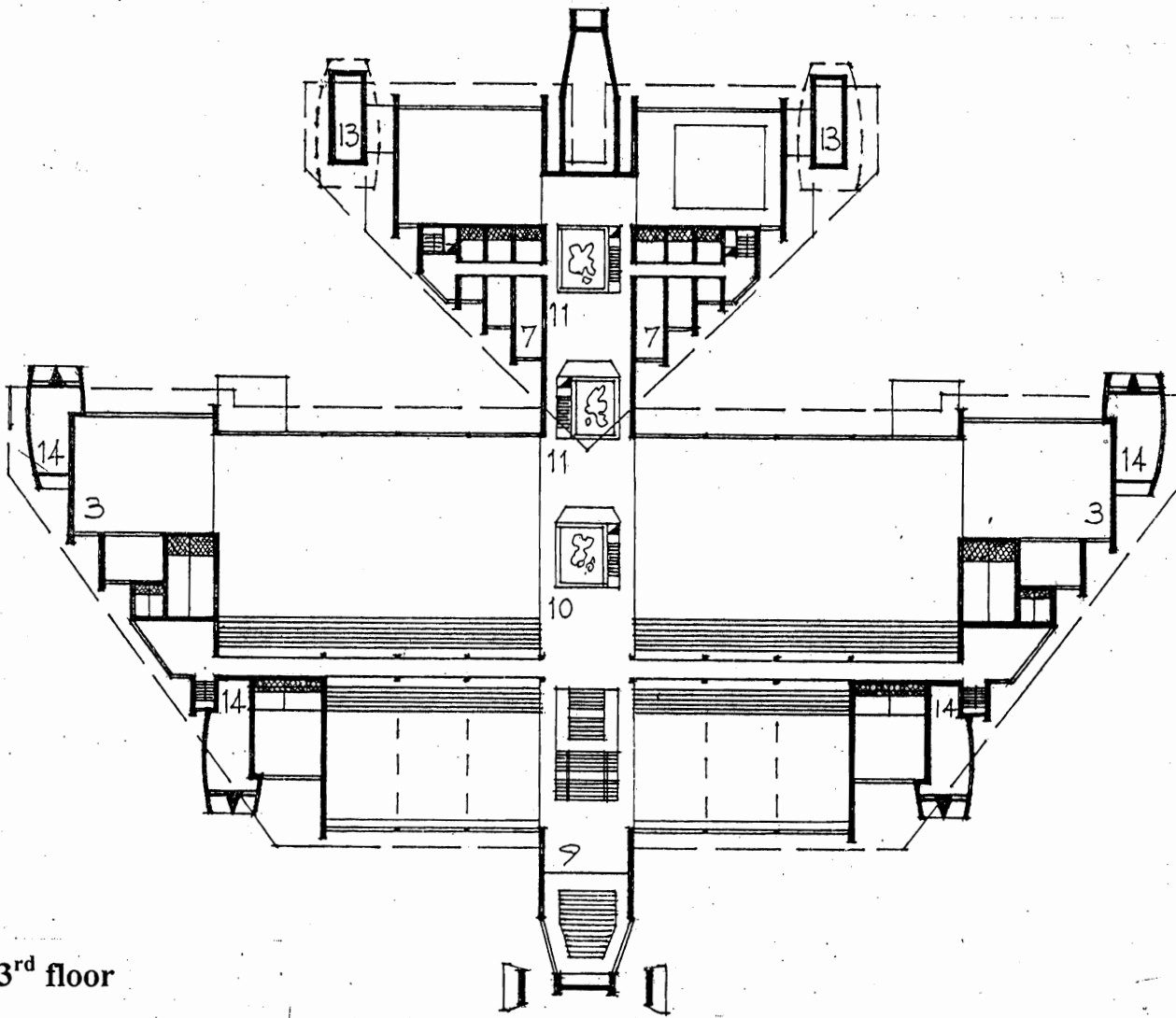


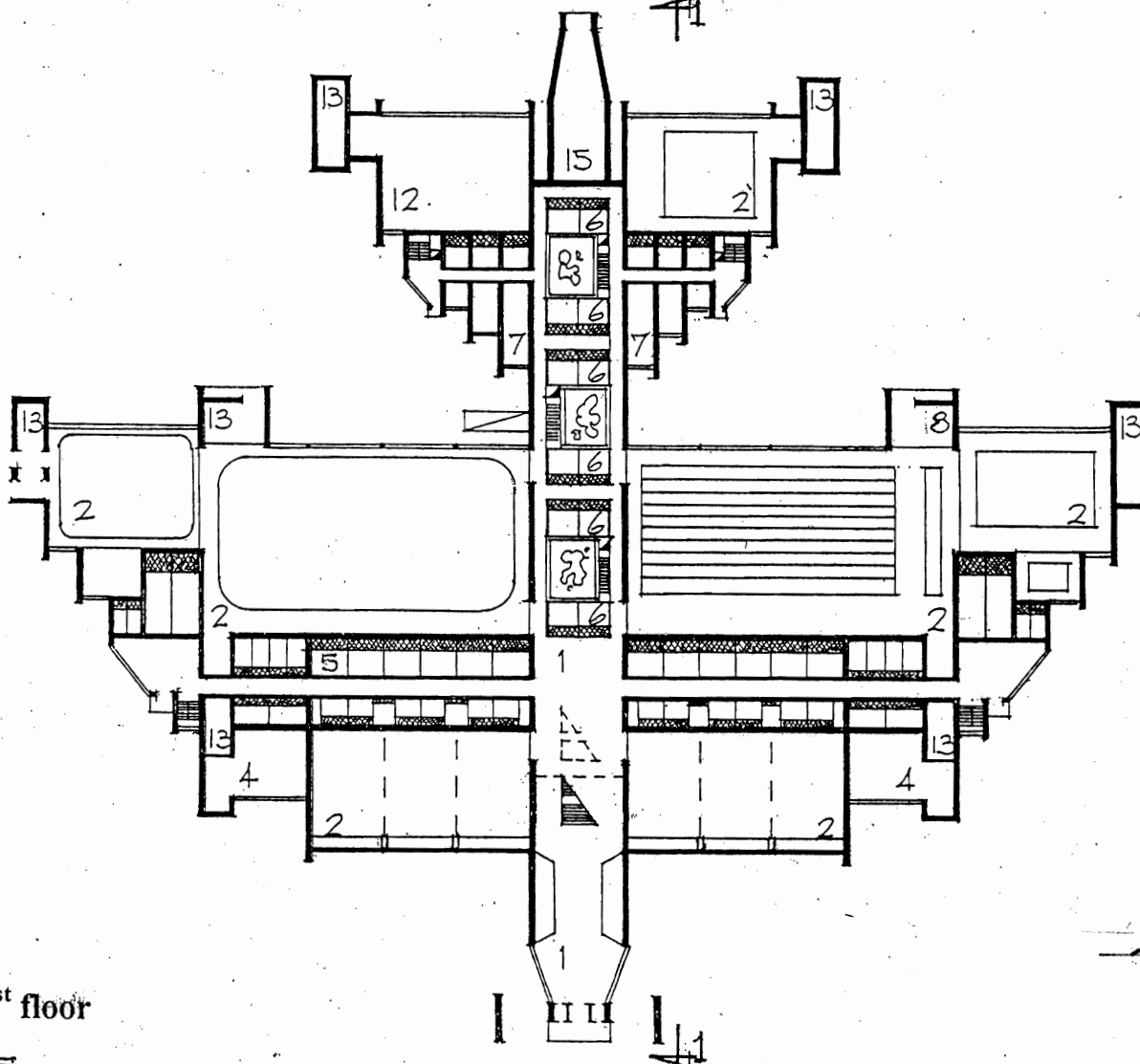
'VIKMA'- THE EXPERIMENTAL SPORTS-CENTER FOR PILOTS



Section 1 - 1



Plan of 3rd floor



Plan of 1st floor

SCALE
 0 10 20 30 40 50 M
 0 30 60 90 120 150 FT

The goal of this experimental project is to discover the possible bounds of allusions in architecture. The sports center includes both typical numerous sports facilities and some sports facilities for special training. The large sports halls, swimming pools, skating rinks, and also foyers, cafeterias, and communications which are located on the level of the 2nd and 3rd floors are united in the huge common space divided only by glass partitions.

EXPLICATION

1 - lobbies, foyers; 2 - large sports halls, swimming pools, skating rinks; 3,4 - small sports halls; 5 - blocks of dressing rooms; 6 - rooms for coaches, medical and administrative personnel; 7 - rehabilitation center; 8 - post for first medical aid and laboratory; 9 - conference hall; 10 - foyer and stands for spectators; 11 - cafeterias; 12 - sports halls and swimming pools for special training; 13 - stock and technical compartments; 14 - ventilation and air conditioning chambers; 15 - premises for the preparation of water for swimming pools and refrigeration plant which is used for recuperating warmth.

VIKTOR MASHINSKY
ARCHITECT