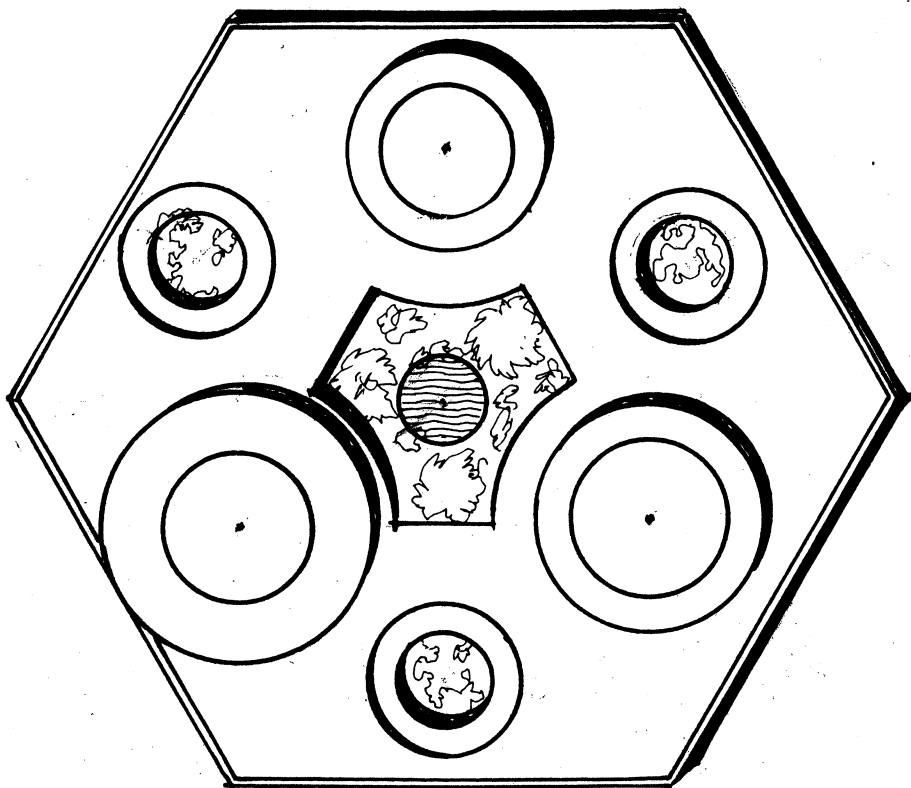
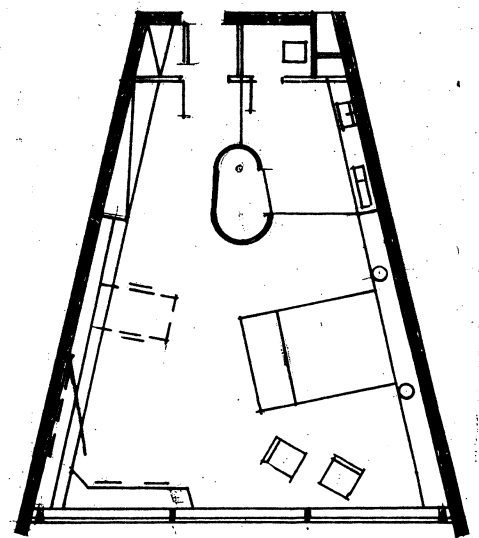
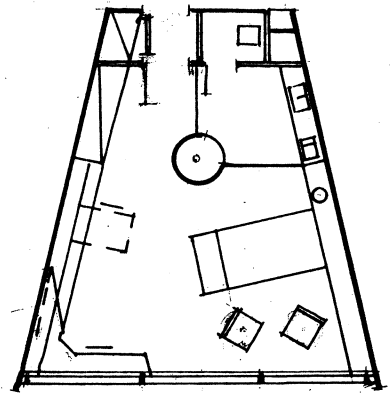
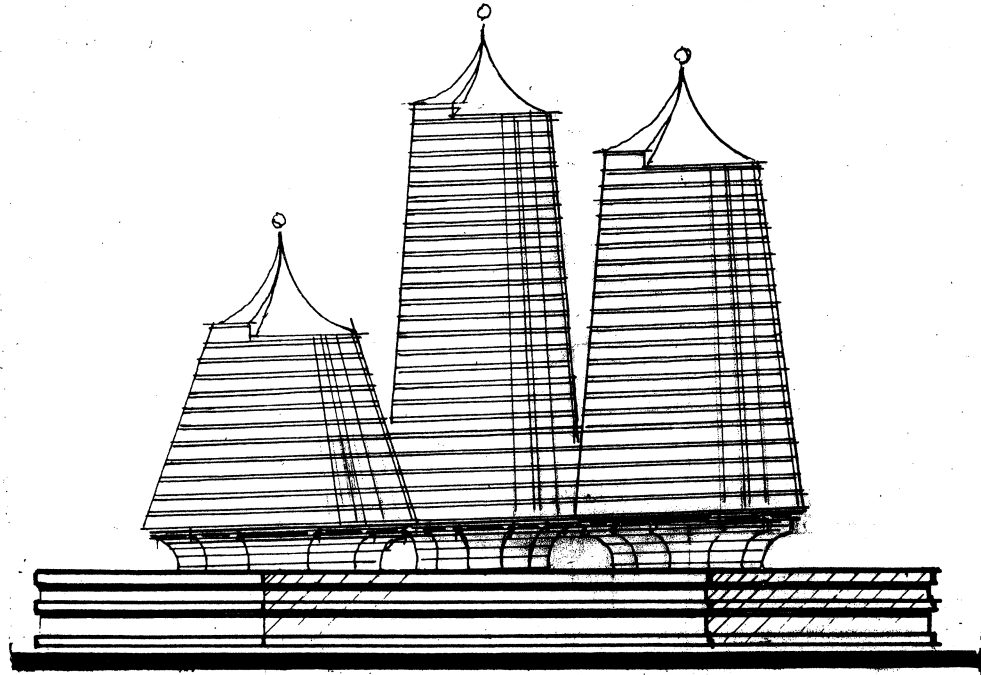
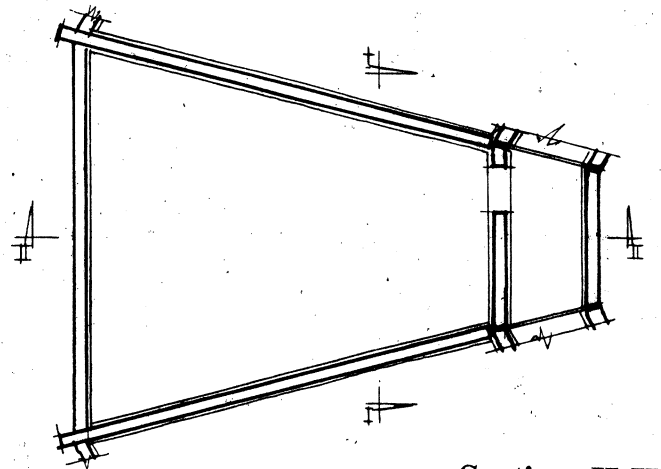


“VIKMA TREE” HOTEL FOR SOUTH-EAST ASIA

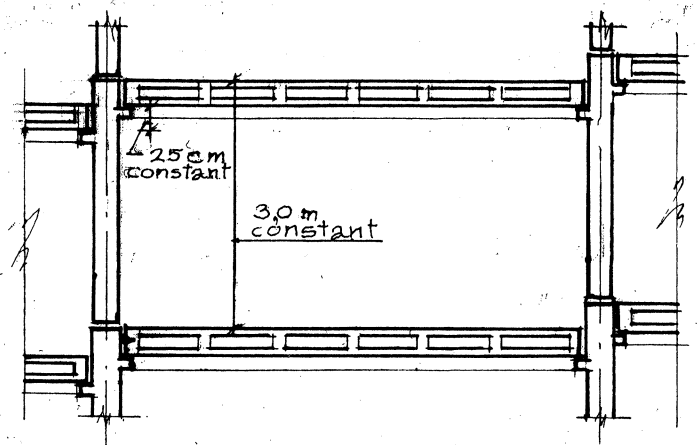
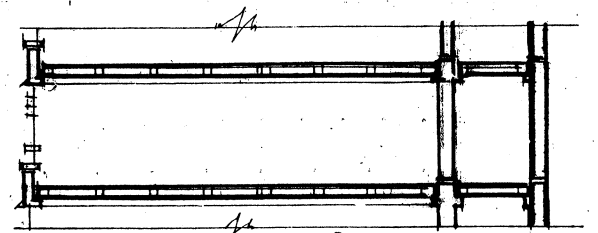
The typical planning of units
for one and two persons



The constructive schemes of principle



Section II-II



Section I-I

The Hotel is a part of a complex, which includes also hotel with units for one person, and a hotel with suites containing several rooms. All hotels are united by a podium where all services are situated (stores, restaurants, cafes, cafeterias, bars, cinemas, salons, spa etc). The main feature of the hotels is the spiral structure of the buildings, The spiral corridor also functions as a staircase. The evacuation staircase is located in the center of each building and is lit by skylight. The another feature of the Hotel is the free planning of units in the center of which steel cabins of showers and bath tubs are located. The material of the Hotel's constructions is metal or prefabricated- monolithic reinforced concrete.

Viktor Mashinsky

**VIKTOR MASHINSKY
ARCHITECT**