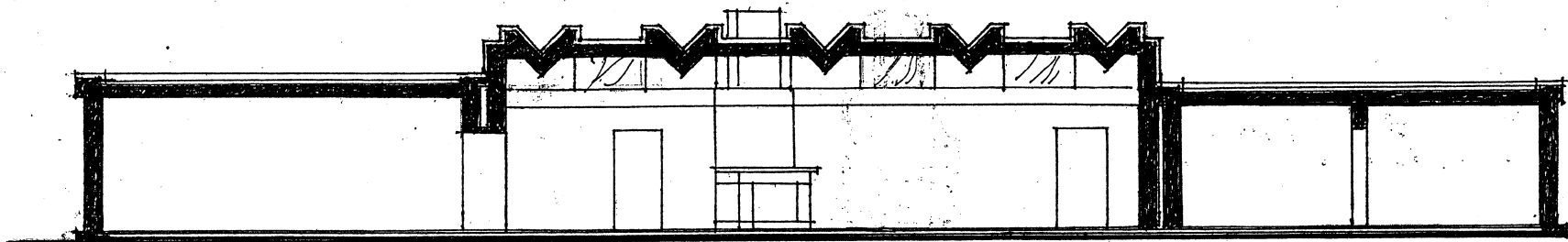
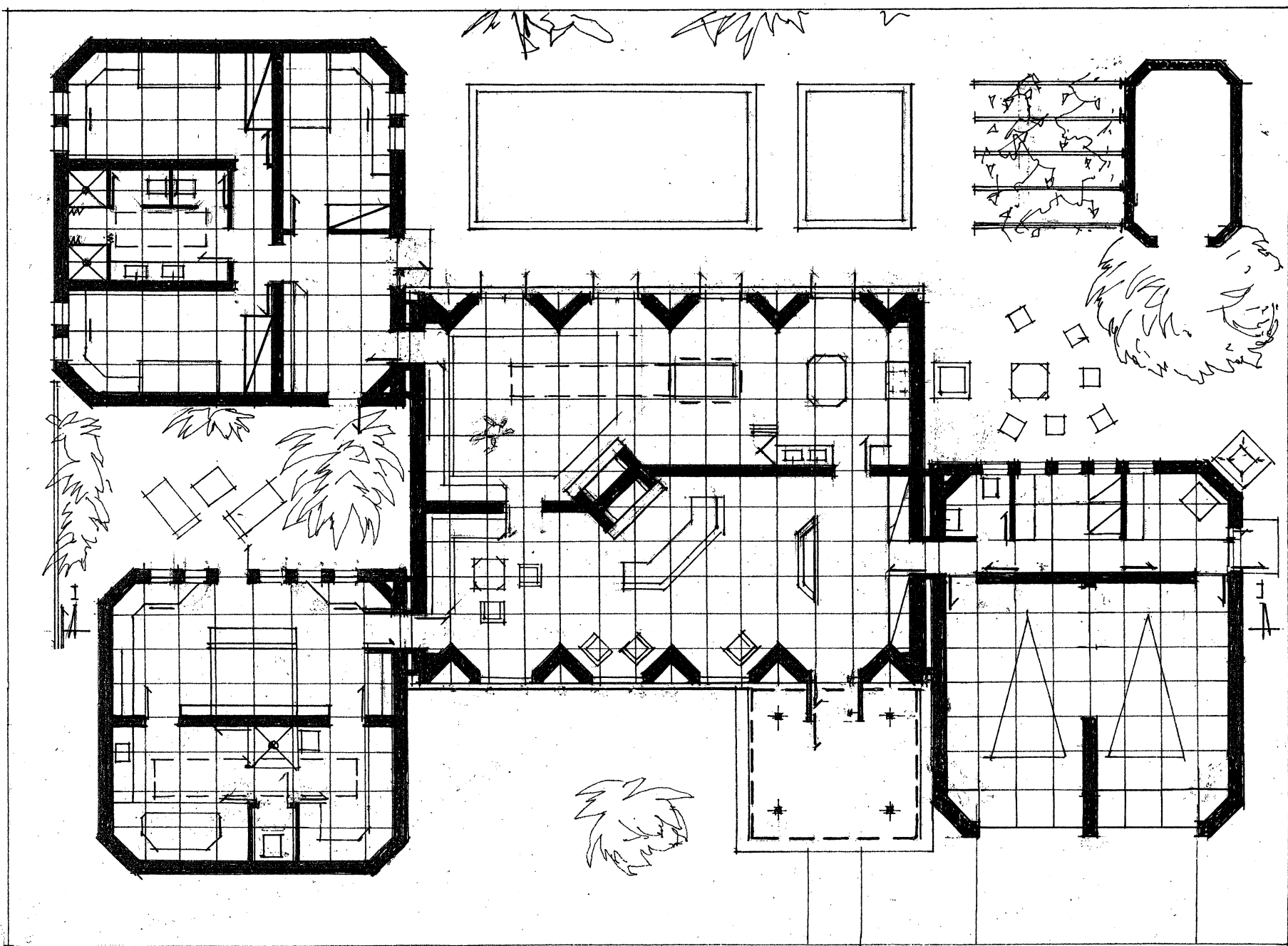
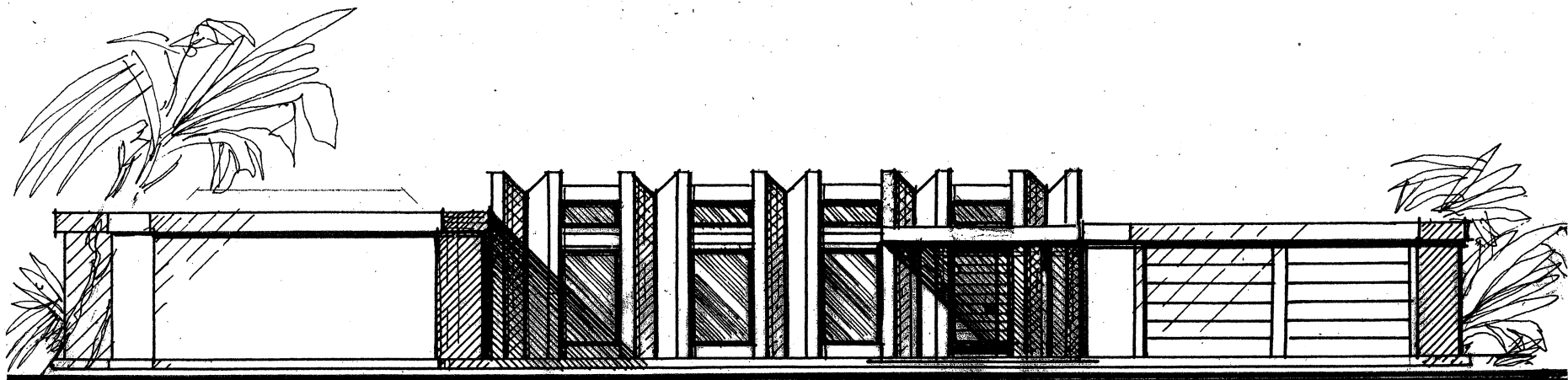


ANTI-SEISMIC HOUSE "GRAPE"



SCALE
0 3 6 9 12 15 ft

This house is designed for California, the state which is known as region with high seismic activity and mild warm climate. In conformity with these characteristics the ecological house "Grape" is formed by some separate volumes. Mutual situation of these volumes can be various depending on conditions of specific location of this house, and wishes of its owner. The house "Grape" can be built of various materials. The living space of the presented version of the house "Grape" is 2820 sq f.

VIKTOR MASHINSKY
ARCHITECT