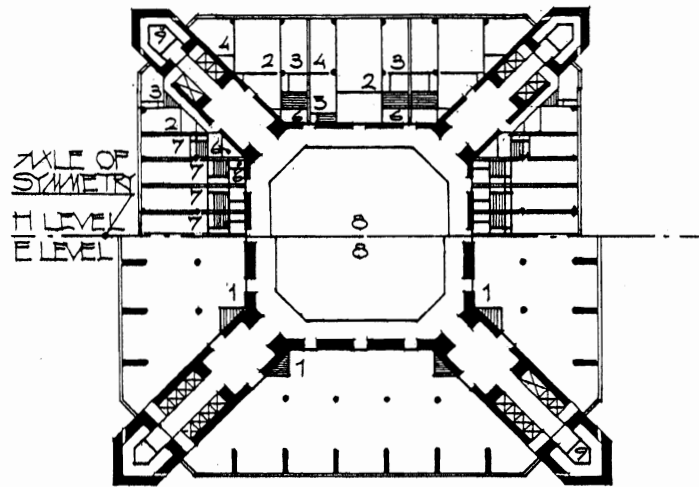
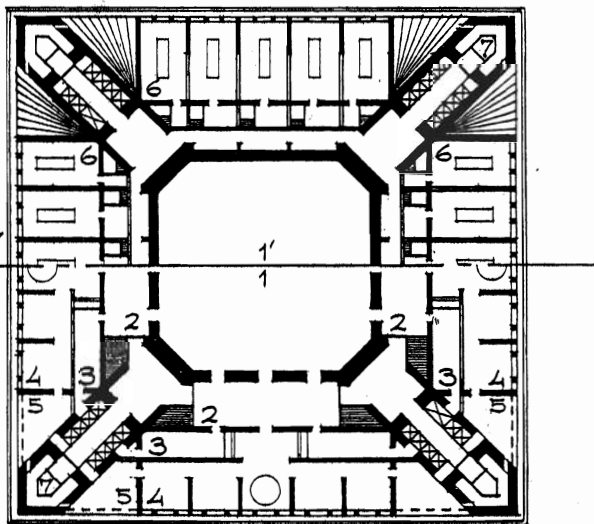


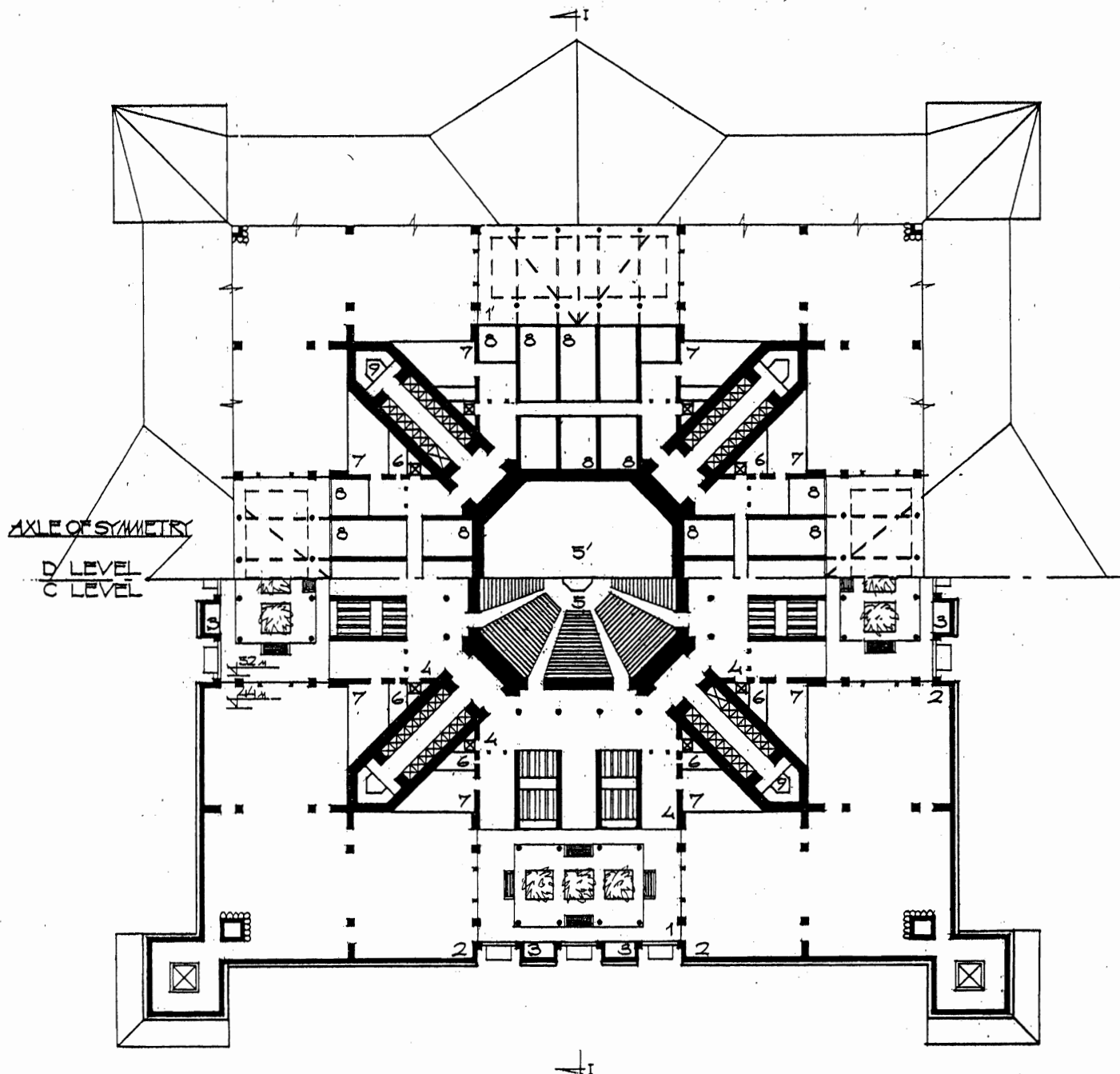
THE TRADE CENTER OF EAST ASIA



Plans of levels "E" and "H"



Plans of levels "F" and "G"



Plans of levels "C" and "D"

The Complex of the Trade Center includes the following building elements

1. Terrace 460 x 460m (1500 x 1500 ft), 18.5m (60.6ft) high above the ground level and 40m (131ft) deep below the ground level. 4 Pavilions 55 x 55m (180 x 180 ft) and 35m (115ft) high are located on the Terrace beside the main building.
2. Podium of the main building 240 x 240m (787 x 787ft), 33.5m (110 ft) high above terrace-level.
3. The main building - The Tower 720m. (2360 ft.) above the ground level. It is 159% higher than the highest existing building in the world - the Petronas Tower, Kuala Lumpur, Malaysia.

Gross area of all main and auxiliary rooms above the Terrace is 875 ths. sq. m (9.41 million sq. ft). Gross area of all rooms of the Terrace (including underground) is 1.5 million sq m (16 millions sq. ft.). Gross volume of the Trade Center above earth-level is 10 million cu. m. (390 millions cu. ft.). Gross volume of the Trade Center lower earth level is 6.4 millions cu. m (228 millions cu. ft.).

The main material of the load bearing structure of the Trade Center is reinforced concrete. The structure of the Trade Center on the present stage of design (without the calculation of the quality of the soils) is verified by calculation based on maximum load. This calculation was performed by the authors of the structures of the existing TV tower in Moscow (Russia) of 500m (1639 ft) high.

Plans on "A" and "B" levels. Explication: 1- main entrance halls; 2- guards and technical service; 3- 1st floor of show-halls of trading samples; 4- service; 5- escalators; 6- restrooms; 7- central foyer on "B" level; 9- monument and 72m (236ft) pedestal with waterfall; 9- subsidiary premises of the show-halls; 10- entrance hall for VIP; 11- hall for official engagements; 12- central foyer on "A" level; 13- glazed elevators of the Mall; 14- entrance hall for people, who use taxi and valet parking; 15- restaurants; 16- finishing kitchens; 17- ramps to valet parking and parking for VIP; 18- entrance hall of hotels; 19- lobby of hotel; 20- moving footways; 21- ramps for pedestrians; 22- ramps for cars and trucks; 23- pavilions of restaurants, casinos, nightclubs and hotels with luxurious apartments.

Plans on "C" and "D" levels. Explication: 1- inner open yards; 2- 2nd floor of show halls; 3- subsidiary premises of show halls; 4- lobbies of Trade Exchange Hall; 5- Trade Exchange Hall; 5'- upper space of Trade Exchange Hall; 6- restrooms; 7- cafeterias; 8- administration of Trade Center and offices of Trade Exchange; 9- nonsmoking evacuating ways.

Plans on "F" and "G" levels. Explication: 1- multipurpose hall (conferences, presentations, parties) 1'- upper space of multipurpose hall; 2- lobbies of multipurpose hall; 3- kitchens of national foods; 4- restaurants and cafes; 5- cafes and restaurants on the balconies under the glass roof; 6- meeting rooms of companies; 7- non-smoking evacuating ways.

Plans on "E" and "H" levels. Explication: 1- offices of companies; 2- living-rooms of hotel apartments; 3- bedrooms; 4- studies; 5- secretaries rooms; 6- services; 7- Hotel units; 8- atrium; 9- non-smoking evacuation ways.

Section I-I. Explication: 1- main entrance halls on "A" and "B" levels; 2- central foyer on "A" and "B" levels; 3- Trade Exchange Hall; 4- foyers on 2nd floor of show-halls; 5- inner open yards; 6- service of show halls, administration of the Trade Center, and offices of the Trade Exchange; 7- multipurpose halls; 8- technical floors; 9- hall of ceremonies with semitransparent walls, and skylight; 10- premises of scientific equipments; 11- the Mall; 12- warehouses; 13- valet parking and parking for VIP; 14- parking garage; 15- pavilions.

SCALE
0 52.5 M (172 FT)

Viktor Mashinsky

**VIKTOR MASHINSKY
ARCHITECT**